



## CASE STUDY

#0317-2025

### INTERNATIONAL FLAVORS AND FRAGRANCES, INC. (IFF)

IFF – International Flavors and Fragrances is a major processing leader in food, beverage, personal care and health with plants located all throughout the world. They deliver sustainable innovations that elevate everyday products.



#### THE CHALLENGE:

One of their Midwestern plants was purchasing steam from a neighboring producer. That steam supply contract was set to expire without a renewal option. This left IFF with a small window of time to make alternative steam supply provisions. Ultimately, they elected to partner with VEO on the development of their own boiler room.

There was a committee of IFF stakeholders involved in the decision-making process. The recommended product solution needed to meet the goals of a diverse group of internal IFF stakeholders – from boardroom to boiler room.

#### THE PRODUCT AND SUPPORT SOLUTION:

In an effort to keep costs under budget, IFF self-managed the project with their in-house engineering and procurement resources. Victory Energy stepped in as the boiler SME (subject matter expert) and provided comprehensive engineering support, including process flow modeling, thermal engineering, and 3D modeling for the new steam plant design. The Victory Energy team (engineering, technical, and sales teams) worked closely with IFF influencers to specify a vertically integrated solution to meet all sustainability and performance criteria.

The goal of IFF was to work with one supplier who could deliver an entire package that worked seamlessly. The recommended solution from Victory Energy included a totally vertically integrated package from one trusted OEM supplier.

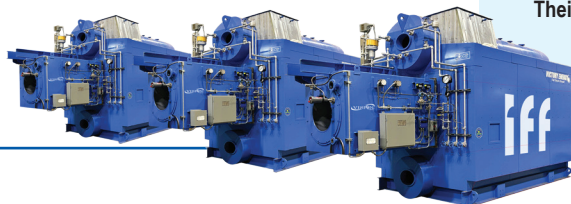
- (3) VOYAGER Series O-Type Watertube Boilers
- LN VISION Burners
- EXPLORER Series Economizer w/Integral DA Preheat Coil
- Ancillary Product Components:
  - ✓ Deaerator ✓ Feedwater Pumps ✓ Blowdown Tank ✓ Plant Master Control Panel ✓ Combustion Control/BMS Panels

Due to the fully integrated package, IFF selected the Victory Energy OEM End-Market team for maintenance support and services. The project moved through Victory Energy's "Fast Track" manufacturing program in record time, ensuring the new plant expansion met its start-up requirements. Victory Energy collaborated closely with the team to establish a flawless commissioning process.



#### CUSTOMER RETURN:

- Energy independence and sustainability
- Energy efficiency and long-term cost reduction
- Improved reliability and consistency for their volatile steam demand loads



Victory Energy truly embodies their concept-to-completion promise, standing by us at every stage of the project.

Their capability to provide a vertically integrated solution that fulfilled our unique sustainability and performance criteria was exactly what they assured us.

Their dedication to customer satisfaction is outstanding.



**SYLVER COLAZO**  
LARGE PROJECT TEAM LEADER