

FIRETUBE BOILER

Extreme-Duty Design

Up to 2,500 HP



UPGRADE WITH SUSTAINABLE SOLUTIONS

At Victory Energy, we believe that the future of all energy must be based upon carbon reduction.

Our goal is to deliver cleaner energy solutions which truly impact the environment for today and future generations.

The FRONTIER series firetube boilers are designed to deliver lower carbon intensity through responsible innovation that delivers global benefits.

WETBACK DESIGN

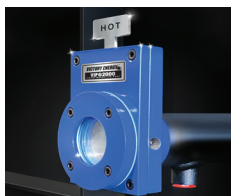
Available in 2-pass, 3-pass and 4-pass configurations.

Victory Energy has long been a trusted name in the manufacturing of wetback firetube boilers for use in demanding applications. The FRONTIER series is engineered to perform in virtually every industry setting.

- Up to 2,500 HP
- Up to 86,250 PPH
- Heavy-duty skids
- Ideally suited for varying steam loads
- Engineered for less yearly maintenance
- Wetback boilers utilize its own water as the heat barrier to boiler components
- Water cooled flue gas reversing chamber



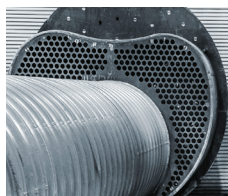
The greatest benefits to vertical integration is predictable results with desired performance.



VIP - VISION Inspection Port



TITAN Water Level Equipment



Proprietary kidney-shaped return



Heavy-duty Expansion Joints



Integral Economizer heat recovery system is available for 2 and 3-pass designs with horsepower ratings from 200 HP to 2,500 HP.

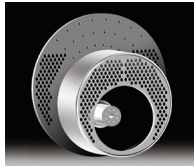
FIRETUBE BOILER

Extreme-Duty Design

Up to 2,500 HP



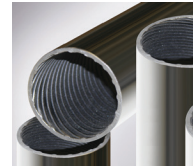
**BY DESIGN, ROBUST FEATURES COME STANDARD
WITH FRONTIER FIRETUBE SERIES**



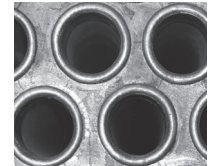
Deep turn-around for ease of maintenance and lower pressure drop



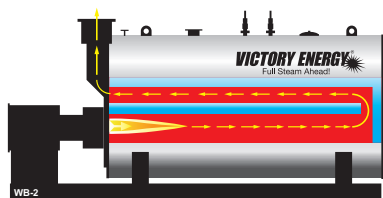
Tube sheet has Sure-Lock ring grooves



Rifled tubes



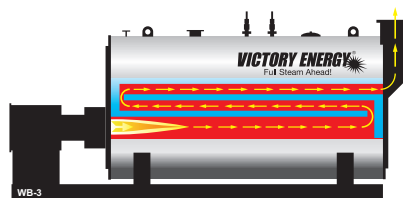
Tube ligaments are .75-inch minimum



F2-WB FEATURES / OPTIONS

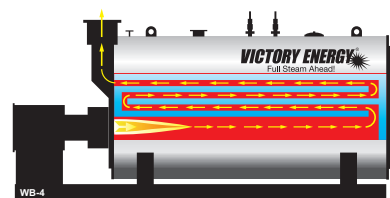
- Optional: Integral Economizer
- Rifled tubes
- Ring groove technology
- Front davited doors
- 24" OD davited access door to water cooled flue gas reversing chamber and furnace section
- Heavy-duty gauge tubes - 0.105" MW
- Heavy-duty steel frame
- .75-inch minimum tubesheet wall thickness
- Water-cooled reversing chamber
- Stainless steel jacket
- 2-inch mineral wool insulation

Note: Corrugated furnace will be offered on any size if high pressure designs are required or if customer prefers.



F3-WB FEATURES / OPTIONS

- Optional: Integral Economizer
- Ring groove technology
- Front davited doors
- Rear davited entry doors
- 24" OD davited access door to water cooled flue gas reversing chamber and furnace section
- Heavy-duty gauge tubes - 0.105" MW
- Heavy-duty steel frame
- .75-inch minimum tubesheet wall thickness
- Water-cooled reversing chamber
- Stainless steel jacket
- 2-inch mineral wool insulation
- Deep turn-around for ease of maintenance and lower pressure drop



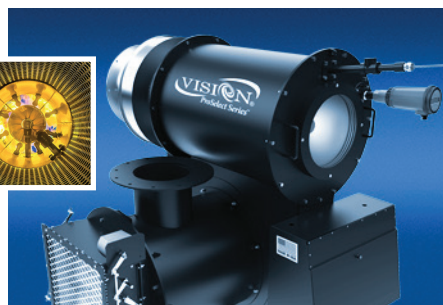
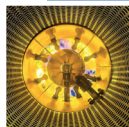
F4-WB FEATURES / OPTIONS

- Ring groove technology
- Front davited doors
- Rear davited entry doors
- Large diameter tubes reduce blower motor HP requirements
- 24" OD davited access door to water cooled flue gas reversing chamber and furnace section
- Heavy-duty gauge tubes - 0.105" MW
- .75-inch minimum tubesheet wall thickness
- Water-cooled reversing chamber
- Stainless steel jacket
- 2-inch mineral wool insulation
- Heavy-duty steel frame



MAXIMIZE EFFICIENCIES WITH VISION

- The VISION® Burner technology ensures complete and efficient combustion with very low emissions
- Durable high-tech power-coated finish
- Totally integrated combustion controls capabilities for both new and retrofit applications
- High-energy/tension SPARKMAX Igniter (HESI)/(HTS)



Engineered for high reliability and low maintenance

