

# WATERTUBE BOILER

Industrial-duty Design

Up to 500,000+ PPH



## UPGRADE WITH SUSTAINABLE SOLUTIONS

At Victory Energy, we believe that the future of all energy must be based upon carbon reduction.

Our goal is to deliver cleaner energy solutions which truly impact the environment for today and future generations.

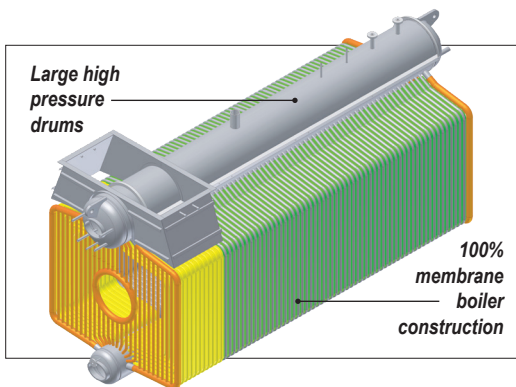
The VOYAGER series watertube boilers are designed to deliver lower carbon intensity through responsible innovation that benefits our world.

### O-TYPE WATERTUBE

The VOYAGER® O-style Boiler is designed to provide a rapid ramp rate and is easy to ship, install, operate and maintain.

These versatile robust boilers have become very popular for applications that have an extremely demanding layout and construction constraints.

- It's symmetrical configuration and slim footprint is ideally suited for ease of logistics and restrictive floor plans
- Refractory free front and rear walls



### VOYAGER SERIES CAPACITIES

- Up to 500,000+ PPH
- Pressures range up to 2,000 PSIG
- Temperatures up to 1,050°F
- Saturated or Superheated steam



Steam Test Facility



In-house Logistics



Aftermarket Services

MODEL	MAX CAP	HEIGHT	WIDTH	LENGTH
VS-1	25,000 PPH	13'-7"	8'-9"	14'-10"
VS-2	37,000 PPH	13'7"	9'-8 3/4"	17'-3"
VS-3	55,000 PPH	13'-11 3/4"	10'-5 3/4"	21'-3"
VSM-75	75,000 PPH	14'-0 7/8"	11'-9 3/4"	31'-3"
VS-4	85,000 PPH	14'-7 3/4"	11'-9 1/2"	27'-11"
VS-5	27,000 PPH	15'-1 3/4"	12'-6 1/2"	34'-11"
VS-6	165,000 PPH	16'-1 7/8"	12'-10 1/2"	39'-11"
VS / VSA-7	250,000 PPH	17'-4"	12'-11"	42'-6"
VS / VSA-8	300,000 PPH	Varies with operational requirements		

*Dimensions are for reference only and subject to change. Larger sizes are available with barge shipments.*

**FUELS: NATURAL GAS, BIO GAS, OFF-GASSES OR #2 - #6 OIL**



# WATERTUBE BOILER

Industrial-duty Design

Up to 500,000+ PPH



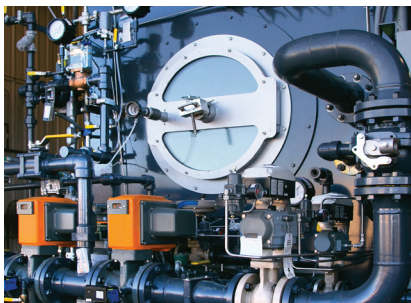
## A PROVEN CHOICE, FOR EXTREME-DUTY APPLICATIONS

- Each boiler is custom engineered and modeled with a complete circulation analysis
- Fully welded gas seals are used throughout, eliminating concerns of hot spots
- Fully membrane boiler reduces CO emissions due to bypassing
- Boilers are 100% water cooled and refractory free front and rear walls
- Conservatively designed tube layouts, coupled with large drums, provide flexibility for all operational conditions
- Radiant / Convective Superheater provides uniform steam temperature profile across the operating range without attemperation



## MAXIMIZE EFFICIENCIES WITH VISION

- The VISION® Burner technology ensures complete and efficient combustion with very low emissions; < 9 ppm NO<sub>x</sub> with low FGR rates
- High reliability and low maintenance
- Efficient operation firing multiple gas & liquid fuels
- Totally integrated combustion controls capabilities, both for new and retrofit boiler applications



## VICTORY ENERGY ECONOMIZER SERIES

- EXPLORER® economizers are custom engineered for each application, providing the highest boiler efficiency, reducing fuel costs and carbon footprint
- Engineered to complement the boiler design and meet required space constraints
- Can be designed to operate in the Condensing mode for incrementally higher heat recovery if suitable heat sink available

