

WATERTUBE BOILER

Industrial-duty Design

Up to 500,000+ PPH

UPGRADE WITH SUSTAINABLE SOLUTIONS

At Victory Energy, we believe that the future of all energy must be based upon carbon reduction.

Our goal is to deliver cleaner energy solutions which truly impact the environment for today and future generations.

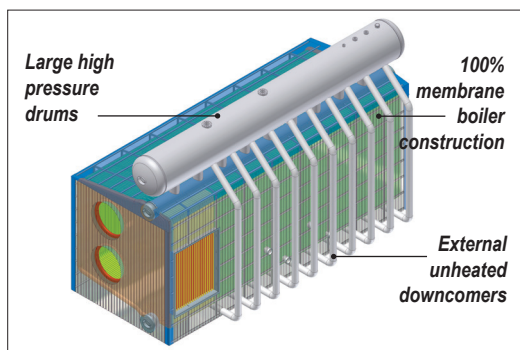
The DISCOVERY series watertube boilers are designed to deliver lower carbon intensity through responsible innovation that benefits our world.



D-TYPE WATERTUBE

DISCOVERY® D-type watertube boilers are operating in hundreds of industrial applications in a multitude of industries worldwide. This proven design offers large furnaces custom fitted to the combustion process and are engineered for long-term reliability. They are especially well-suited for high-pressure, superheated steam applications with larger capacities.

- Large shop assembled modular configurations sizes are available
- All superheaters are placed within the boiler's convective zone, eliminating exposure to the radiant energy in the furnace
- Elevated steam drum provides enhanced circulation



DISCOVERY SERIES CAPACITIES

- Up to 500,000+ PPH
- Pressures range up to 2,000 PSIG
- Temperatures up to 1,050°F
- Saturated or Superheated steam
- Ideal for large capacities & modular configurations



Steam Test Facility



In-house Logistics



Aftermarket Services

MODEL	MAX CAP	HEIGHT	WIDTH	LENGTH
DT-1	30,000 PPH	12'-10"	11'-0½"	16'-8½"
DT-2	50,000 PPH	13'-10"	11'-2½"	20'-3"
DT-3	100,000 PPH	15'-1"	12'-3"	26'-7"
DT-4	150,000 PPH	15'-11"	12'-6½"	35'-7"
DT-5	225,000 PPH	17'-3"	12'-1"	43'-11"
DT-6 / Elevated Drum	500,000 PPH+	Varies	Varies	Varies

*Dimensions are for reference only and subject to change. Larger sizes are available with barge shipments.
FUELS: NATURAL GAS, BIO GAS, OFF-GASSES OR #2 - #6 OIL*

WATERTUBE BOILER

Industrial-duty Design

Up to 500,000+ PPH



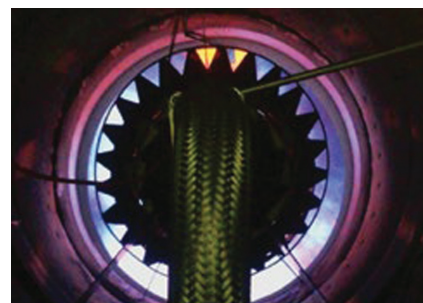
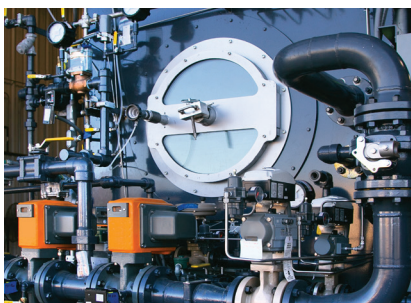
A PROVEN CHOICE, FOR EXTREME-DUTY APPLICATIONS

- Each boiler is custom engineered and modeled with a complete circulation analysis
- Fully welded gas seals are used throughout, eliminating concerns of hot spots
- Fully membrane boiler reduces CO emissions due to bypassing
- Boilers are 100% water cooled and refractory free front and rear walls
- Conservatively designed tube layouts, coupled with large drums, provide flexibility for all operational conditions
- Elevated / remote steam drum configurations available



MAXIMIZE EFFICIENCIES WITH VISION

- The VISION® Burner technology ensures complete and efficient combustion with very low emissions;
< 9 ppm NO_x with low FGR rates
- High reliability and low maintenance
- Efficient operation firing multiple gas & liquid fuels
- Totally integrated combustion controls capabilities, both for new and retrofit boiler applications



VICTORY ENERGY ECONOMIZER SERIES

- EXPLORER® economizers are custom engineered for each application, providing the highest boiler efficiency, reducing fuel costs and carbon footprint
- Engineered to complement the boiler design and meet required space constraints
- Can be designed to operate in the Condensing mode for incrementally higher heat recovery if suitable heat sink available

