

IN-STOCK INVENTORY



O-TYPE BOILER - UP TO 125,000 PPH

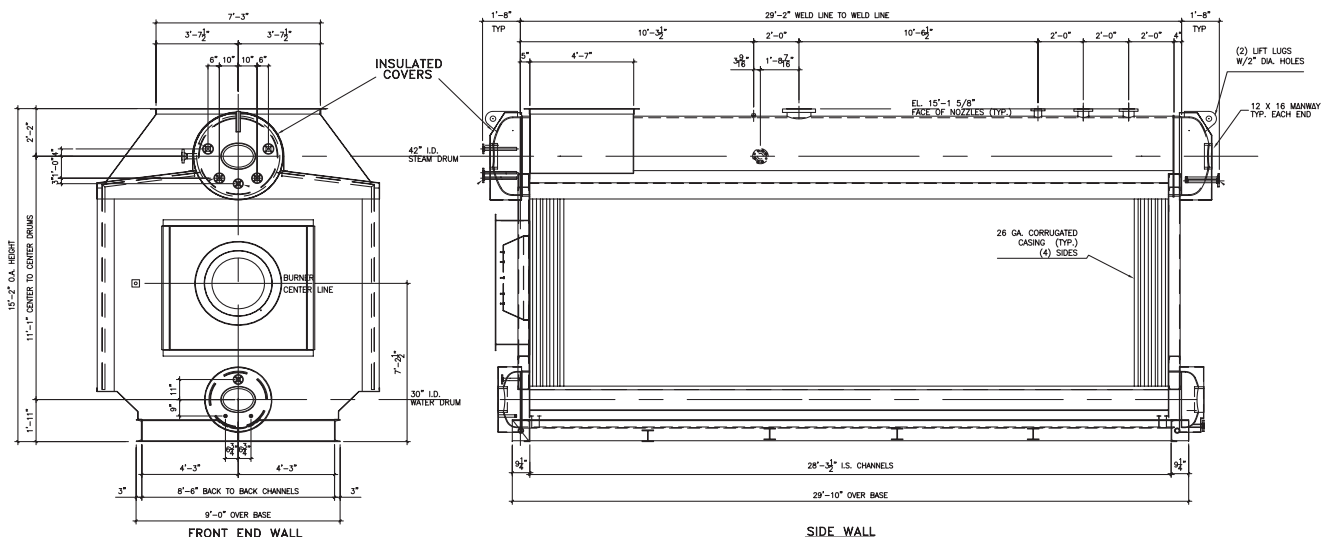
- Model No.: VS-5-80 Saturated
- Unit Condition: Used
- Number of Units: Two (2)
- Unit Type: O-Type Watertube
- Fully shop assembled truck and rail shippable
- Reference: 731

SPECIFICATIONS

- Design Pressure: 250 PSIG
- Weight (Lbs.) Shipping: 128,000
- Overall Dimensions: (OW x OH x OL): 12'-6-5/8" (W) x 15'-2" (H) x 37'-10" (L) (including windbox)
- Fuel Source: Natural Gas

SCOPE OF SUPPLY

- One Low NOx Burner, with FGR, FD fan, silencer, motor, and VFD.
- One (1) each, Natural Gas Primary and Pilot Trains
- One (1) Fireeye Burner Management System (BMS)
- One (1) Lot, Primary Feedwater & Steam Trim
- One (1) Economizer
- One (1) Boiler Instrumentation Package



IN-STOCK INVENTORY



O-TYPE BOILER - UP TO 220,000+ PPH

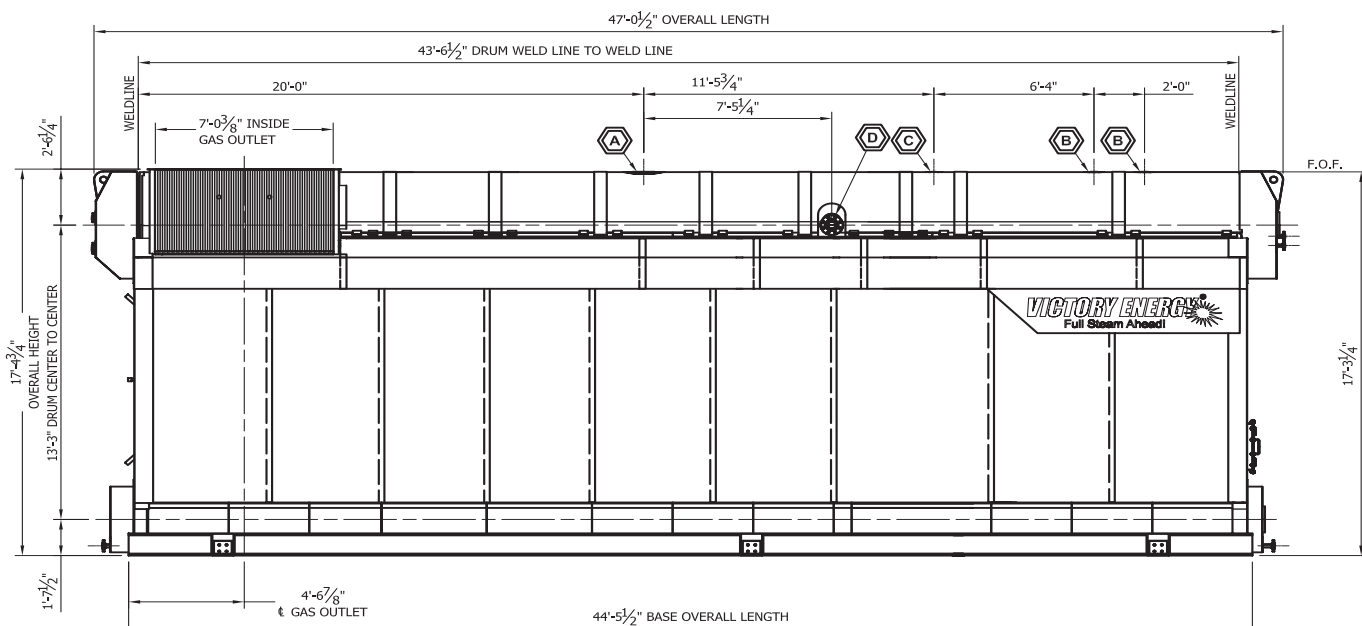
- Model No.: VS-7-121 Saturated
- Unit Condition: New
- Unit Type: O-Type Watertube
- Fully shop assembled and rail shippable
- Reference: 15841

SPECIFICATIONS

- Design Pressure: 550 PSIG
- Weight (Lbs.) Shipping: 205,000
- Overall Dimensions: (OW x OH x OL): 12'-10"(W) x 17'-4" (H) x 47'-1 1/2" (L)
- Fuel Source: Natural Gas

SCOPE OF SUPPLY

- One (1) VISION Low NOx Burner, with FGR, FD fan, silencer, motor, and VFD.
- One (1) each, Natural Gas Primary and Pilot Trains
- One (1) Fireeye Burner Management System (BMS)
- One (1) PLC-based Combustion Control System (CCS)
- One (1) Lot, Primary Feedwater & Steam Trim
- One (1) Economizer
- One (1) Boiler Instrumentation Package



FOLLOW A LEADER



1-877-783-2665

PROUD MEMBER



IN-STOCK INVENTORY



O-TYPE BOILER - UP TO 75,000 PPH

- Model No.: VSM-75-84 Superheated
- Number of Units: Two (2)
- Unit National Board No.: Available upon request
- Unit Condition: New
- Unit Type: O-Type Watertube
- Ready to Ship
- Reference: 14638

SPECIFICATIONS

- Capacity: 75,000 PPH
- Design Pressure: 750 PSIG
- Super Heater Design Temperature: 750° F
- Weight (Lbs.) Shipping: 125,000
- Overall Dimensions: (OW x OH x OL): 10' 9.5" (W) x 13' 6" (H) x 31' 3" (L) (WL to WL)
- Fuel Source: Natural Gas, and/or No. 2 Oil
- Electrical: Volts / Hertz / Phase: 480 / 60 / 3

SCOPE OF SUPPLY

- Windbox mounted AB CompactLogix CCS; Honeywell BMS
- Windbox mounted fuel trains
- Faber Burner
- Motor: 150 hp
- Boiler Mounted Disconnect / Motor Starter Panel
- Full Compliment of Trim Items
- Low Emissions Gas: 30ppm NOx, Oil 90ppm NOx, 100 ppm CO Available
- Stub Stack to 50' Finish Elevation
- Economizer / Stack Support Structure
- Transition Ducts
- Boiler Outlet Expansion Joint
- Economizer



IN-STOCK INVENTORY



O-TYPE BOILER - UP TO 37,250 PPH

- Model No.: VS-4-51 Superheated
- Number of Units: Two (2)
- Unit National Board No.: Available upon request
- Unit Condition: New
- Unit Type: O-Type Watertube
- Shrink Wrapped and Ready to Ship
- Reference: 12665

SPECIFICATIONS

- Capacity: 37,250 PPH
- Design Pressure: 1,000 PSIG
- Super Heater Design Temperature: 1,150° F
- Weight (Lbs.) Shipping: 119,600
- Overall Dimensions: (OW x OH x OL): 11' 9"(W) x 14' 8" (H) x 20' 3" (L) (WL to WL)
- Fuel Source: Natural Gas, and/or Produced Gas
- Electrical: Volts / Hertz / Phase: 480 / 60/3
- Drums Have 0.125" Corrosion Allowance

SCOPE OF SUPPLY

- Allen Bradley CompactLogix
- Coen Company/Todd Combustion/Model ECO-JET
- Motor: 60 hp
- Full Compliment of Trim Items
- Low Emissions: 30ppm NOx, 50 ppm CO Available
- Stub Stack to 50' Finish Elevation
- Economizer / Stack Support Structure
- Transition Ducts
- BFW Heating Coil - Located in Steam Drum
- Boiler Outlet Expansion Joint
- Economizer



IN-STOCK INVENTORY



HORIZON HRSG 26,314 PPH - UNFIRED UP TO 42,930 PPH

- Model No.: Horizon Series Watertube, Saturated or Superheated
- Number of Units: One (1)
- Unit National Board No.: Available upon request
- Unit Condition: New
- Unit Type: Watertube HRSG
- Shrink Wrapped and Ready to Ship
- Reference: 12250

SPECIFICATIONS

Turbine	Model	Sat. lb/h	S/H lb/h	F.
Siemens	SGT-200	26,314	24,843	510
Siemens	SGT-300	38,211	36,366	498
Siemens	SGT-400	44,950	42,930	493
Solar	Taurus 70	31,900	30,458	493
Solar	Mars 90	38,587	37,164	482

- Design Pressure: 450 PSIG
- Super Heater Design Temperature: 1,150° F
- Weight (Lbs.) Shipping: 94,183
- Overall Dimensions: (OW x OH x OL): 10' 8.5"(W) x 14' 3.5" (H) x 32' 6" (L)(WL to WL)
- Fuel Source: WasteHeat or Turbine Exhaust
- Shrink Wrapped and Ready to Ship

SCOPE OF SUPPLY

- Full Compliment of Trim Items
- Economizer / Support Structure
- Integral Superheater is Optional
- Boiler Outlet Expansion Joint
- Economizer



IN-STOCK INVENTORY



HORIZON HRSG STANDARD 40

- Model No.: STD 40
- Number of Units: 2
- Unit Condition: Retubed / Reconditioned
- Unit Type: Waste Heat Boiler
- Shrink Wrapped and Ready to Ship
- Reference: 723

SPECIFICATIONS

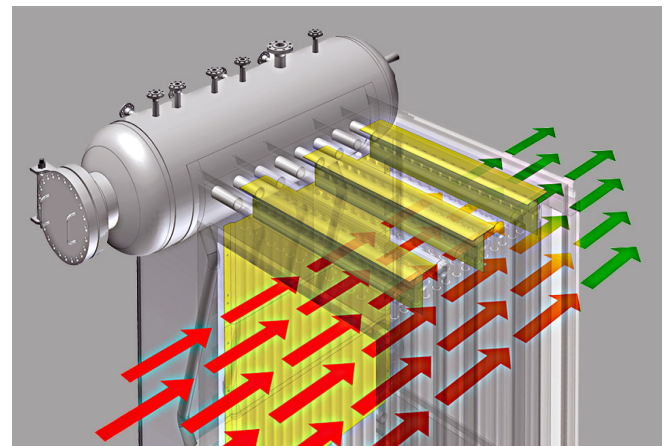
Turbine	Model	lb/h
Siemens*	SGT-300	40,365
Siemens*	SGT-400	47,777
Taurus*	70	33,667
Mars*	90	41,365

* No duct burner / Saturated

- Design Pressure: 220 PSIG
- Weight (Lbs.) Shipping: 65,000 LBS
- Overall Dimensions: H=17'-10", L=12'-10", W=13'-9"
- Fuel Source: Waste Heat or CT Exhaust

SCOPE OF SUPPLY

- Waste Heat Boiler (WHB)
- Full Compliment of Trim Items



VICTORY ENERGY®

ECONOMIZER



IN-STOCK INVENTORY



EXPLORER STANDARD 50 ECONOMIZER

- Model No.: Upsized STD 50
- Number of Units: 1
- Unit Condition: New
- Unit Type: Modular Economizer for service in Ethanol Plants



FOLLOW A LEADER



1-877-783-2665

VICTORY ENERGY OPERATIONS, LLC | 10701 E. 126TH ST. N., COLLINSVILLE, OK 74021 | TEL: 918.274.0023 FAX: 918.382.4896 11/01/2021

PROUD MEMBER
ABMA
LEADERSHIP FOR THE BOILER INDUSTRY

IN-STOCK INVENTORY



50 HP / 3-PASS / DRYBACK DESIGN

- Quantity: Two / New Condition
- Nominal Capacity: 1,725 PPH
- Design Pressure: 150 PSIG
- Burner / Powerflame, C-Series
- Reference: #13587, #15012

70 HP / 3-PASS / DRYBACK DESIGN

- Quantity: Three / New Condition
- Nominal Capacity: 2,415 PPH
- Design Pressure: 150 PSIG
- Burner / Powerflame, C-Series
- Reference: #13868, #13883, #13485

100 HP / 3-PASS / DRYBACK DESIGN

- Quantity: Five / New Condition
- Nominal Capacity: 3,450 PPH
- Design Pressure: 150 PSIG
- Burner / Powerflame, C-Series
- Reference: #13952, #14071, #14201, #14450, #14976

150 HP / 3-PASS / DRYBACK DESIGN

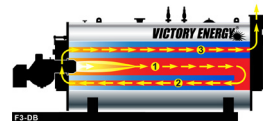
- Quantity: Two / New Condition
- Nominal Capacity: 5,175 PPH
- Design Pressure: 150 PSIG
- Burner / Powerflame, C-Series
- Reference: #15331, #15330

175 HP / 3-PASS / DRYBACK DESIGN

- Quantity: Four / New Condition
- Nominal Capacity: 6,038 PPH
- Design Pressure: 150 PSIG
- Burner / Powerflame, C-Series
- Reference: #14175, #15184, #15238, #15332

200 HP / 3-PASS / DRYBACK DESIGN

- Quantity: One / New Condition
- Nominal Capacity: 6,900 PPH
- Design Pressure: 150 PSIG
- Burner / Powerflame, C-Series
- Reference: #13665-4



**EFFICIENT
CENTER-FIRED DESIGN**

250 HP / 3-PASS / DRYBACK DESIGN

- Quantity: One / New Condition
- Nominal Capacity: 8,625 PPH
- Design Pressure: 150 PSIG
- Burner / Powerflame, C-Series
- Reference: #15353

300 HP / 3-PASS / DRYBACK DESIGN

- Quantity: One / New Condition
- Nominal Capacity: 10,350 PPH
- Design Pressure: 150 PSIG
- Burner / Powerflame, C-Series
- Reference: #13741

IN-STOCK INVENTORY



400 HP / 3-PASS / DRYBACK DESIGN

- Quantity: One / New Condition
- Nominal Capacity: 13,800 PPH
- Design Pressure: 150 PSIG
- Burner / Powerflame, C-Series
- Reference: #14449

600 HP / 3-PASS / DRYBACK DESIGN

- Quantity: One / New Condition
- Nominal Capacity: 20,700 PPH
- Design Pressure: 250 PSIG
- Burner / Powerflame, C-Series
- Reference: #15247

800 HP / 3-PASS / DRYBACK DESIGN

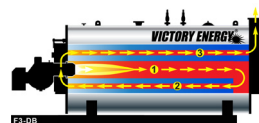
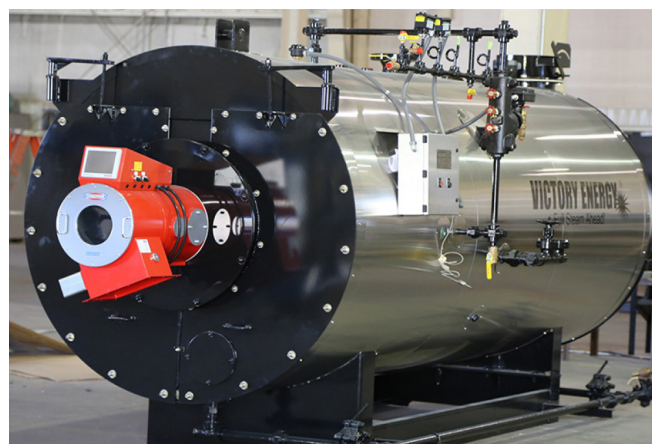
- Quantity: One / New Condition
- Nominal Capacity: 27,600 PPH
- Design Pressure: 250 PSIG
- Burner / Powerflame, PF LNIC11A-GO-30
- Reference: #15916

1,200 HP / 3-PASS / DRYBACK DESIGN

- Quantity: One / New Condition
- Nominal Capacity: 41,400 PPH
- Design Pressure: 250 PSIG
- Burner / Powerflame, C-Series
- Reference: #14056

1,500 HP / 3-PASS / DRYBACK DESIGN

- Quantity: One / New Condition
- Nominal Capacity: 51,750 PPH
- Design Pressure: 250 PSIG
- Burner / Powerflame
- Reference: #16049



**EFFICIENT
CENTER-FIRED DESIGN**

2,500 HP / 3-PASS / DRYBACK DESIGN

- Quantity: One / New Condition
- Nominal Capacity: 86,250 PPH
- Design Pressure: 250 PSIG
- Burner / Powerflame
- Reference: #16050

IN-STOCK INVENTORY



75,000 PPH, LOW NO_x TRAILER-MOUNTED BOILER

Victory Energy's low NO_x 75,000 pph, 350 psig trailer-mounted package watertube boiler is set to burn natural gas or #2 oil. It is fully piped and wired.

SCOPE OF SUPPLY:

- Low NO_x Burner
- Explorer Economizer
- Titan Water Controls
- Combustion Solutions Control Panel
- Forced Draft Fan, Motor & Starter
- Complete Fuel Train & Pilot Ignition System
- Safety Valves
- Low-water Cutoffs
- Feedwater Stop & Check Valves
- Blowdown Valves
- Continuous Blowdown Metering Valve
- Chemical Feed Valve
- Single Element Feedwater Regulator with Pre-piped 3 Valve Bypass
- Steam Non-return Valve (loose)
- Stack (loose)
- NEMA 4 Electrical Enclosures

FUEL CONSUMPTION:

Natural Gas: 99.9 MMbtu/hr @ 15-25 psi reg.
#2 Oil: 765 GPH

CONNECTION SIZES:

Main Steam: 6"-300# FLG
Natural Gas: 6"-125# FLG
#2 Oil Supply/Return: 2" NPT / 1.25" NPT
Feedwater: 2.5"-300# FLG
Bottom Blowdown: 1.5"-300# FLG
Continuous Blowdown: 0.75" NPT
Chemical Feed: 0.5" NPT
Atomizing Air/Steam: 2" NPT / 3"-150# FLG
Instrument Air: 0.5" NPT
Water Column Drain: 0.75" NPT



ELECTRICAL POWER SERVICE REQUIREMENTS:

480 VAC, 3 ph, 60 hz, 200 AMPS

BOILER DIMENSIONS & WEIGHTS:

Length/Width/Height: 10'4"-14'2"-9'16"-23'4"
Shipping Weight: 83,000 lbs
Operating Weight: 108,000 lbs

EMISSIONS DATA (NATURAL GAS):

NO_x (corr. to 3% O₂): 30 ppm
CO (corr. to 3% O₂): 100 ppm

IN-STOCK INVENTORY



75,000 PPH, LOW NO_x 750 PSIG / 750°F SUPERHEAT SKID-MOUNTED BOILER

Victory Energy's low NO_x 75,000 pph, 750 psig / 750°F design, superheat steam, trailer-mounted package watertube boiler is set to burn natural gas or #2 oil. It is fully piped and wired.

SCOPE OF SUPPLY:

- Low NO_x Vision Burner
- Explorer Economizer (Optional)
- Titan Water Controls
- Combustion Solutions Control Panel
- Forced Draft Fan, Motor & Starter
- Complete Fuel Train & Pilot Ignition System
- #2 Fuel Oil Pump
- Safety Valves
- Low-water Cutoffs
- Feedwater Stop & Check Valves
- Blowdown Valves
- Continuous Blowdown Metering Valve
- Chemical Feed Valve
- Single Element Feedwater Regulator with Pre-piped 3 Valve Bypass
- Steam Non-return Valve (loose)
- Stack (loose)
- NEMA 4 Electrical Enclosures
- Meets FM, NFPA 85 & IRI Insurance Standards

FUEL CONSUMPTION:

Natural Gas: 107,500 SCFH @ 15-25 psi reg.
#2 Oil: 765 GPH

EMISSIONS DATA (NATURAL GAS):

NO_x (corr. to 3% O₂): 30 ppm
CO (corr. to 3% O₂): 50 ppm

ELECTRICAL:

480 VAC, 3 ph, 60 hz, 200 AMPS

BOILER DIMENSIONS & WEIGHTS:

Length/Width/Height: 61'4" / 10'0" / 14'0"4"
Shipping Weight: 126,000 lbs
Operating Weight: 170,000 lbs



CONNECTION SIZES:

Main Steam: 8"-800# FLG
Natural Gas: 6"-125# FLG
#2 Oil Supply/Return: 2" NPT / 1.25" NPT
Feedwater: 2.5"-800# FLG
Bottom Blowdown: 1.5"-800# FLG
Continuous Blowdown: 0.75" NPT
Chemical Feed: 0.5" NPT
Atomizing Air/Steam: 2" NPT / 3"-150# FLG
Instrument Air: 0.5" NPT
Water Column Drain: 0.75" NPT

IN-STOCK INVENTORY

75,000 PPH, RENTAL DEAERATOR

Victory Energy's low NOx 75,000 pph, 750 psig / 750°F design, superheat steam, trailer-mounted package watertube boiler is set to burn natural gas or #2 oil. It is fully piped and wired and includes the following components:

SYSTEM DESIGN INFORMATION

Continuous Capacity:	Designed for Max 75,000 PPH, 350 PSI Designed Boiler - Higher custom pressures available.
Oxygen Removal:	Not more than .005cc/Liter To Zero.
C02 Removal:	To Zero
Water Pressure Required:	40-100 PSI
Water Softener Capacity:	Up to 2,250,000 Grains Hardness Removal
Medium Temp.:	Condensate Return = 180°F - 227°F
High Temp.:	Condensate Return = >227°F
Chemical Feed System:	Cust. Supplied chemicals

TRAILER SHIPPING INFO

Overall Length:	53'-0"
Overall Width:	8'-6"
Gross Weight:	53,400 lbs

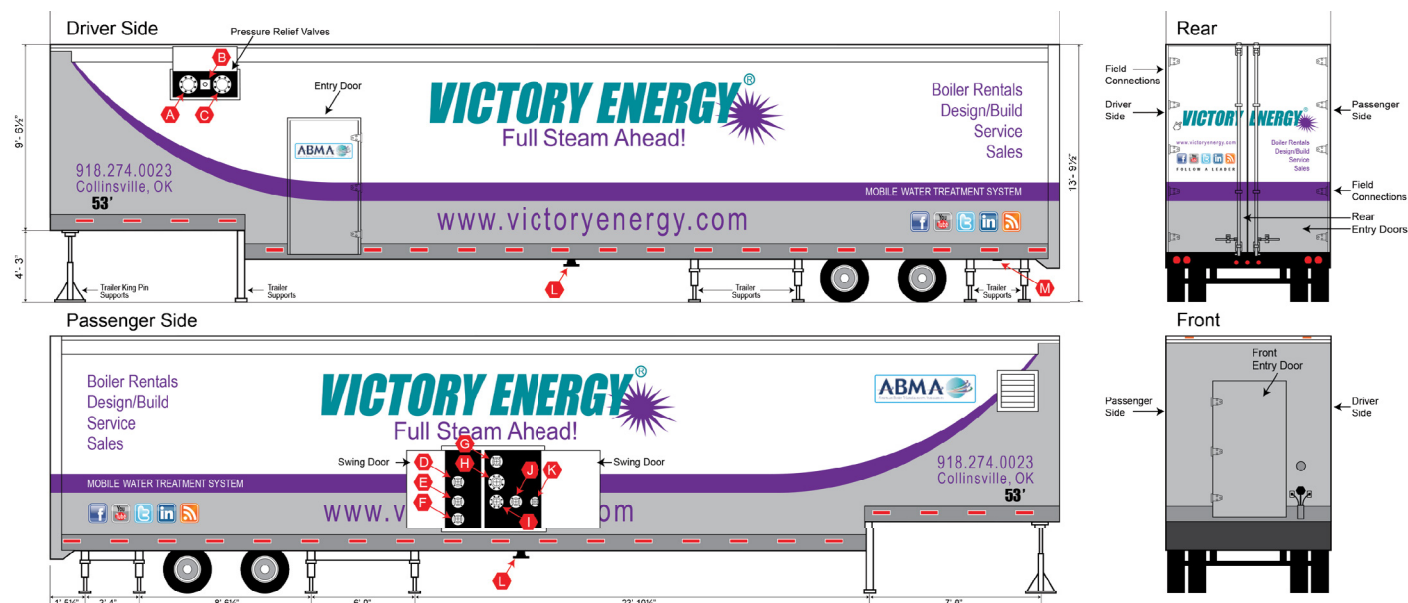


FIELD UTILITY REQUIREMENTS

Water Supply Pressure:	40 to 100 PSI (MAX)
Power Supply:	3 Phase, 60 Hz, 480 V (300 Amp Service Required)

FIELD CONNECTIONS SIZE RATING

- A Pressure Relief Valve 6" 150#
- B DA Tank Vent 1-1/2" NPT
- C Pressure Relief Valve 6" 150#
- D Water Softener - to Customer 3" 150#
- E Water Softener - from Customer 3" 150#
- F Utility Water - from Customer 3" 150#
- G Medium Temp. Condensate Return - from Customer 3" 150#
- H Let Down Steam - from Customer 4" 300#
- I Pressurized Deaerated Water - to Customer 3" 300#
- J Deaerated Water - to Customer 3" 150#
- K High Temp Return - from Customer 2" 150#
- L Drain Line - to Customer 4" 150#
- M Customer Power Supply - to Trailer 3" Conduit



FOLLOW A LEADER



1-877-783-2665

VICTORY ENERGY OPERATIONS, LLC | 10701 E. 126TH ST. N., COLLINSVILLE, OK 74021 | TEL: 918.274.0023 FAX: 918.382.4896 11/01/2021

PROUD MEMBER
ABMA
LEADERSHIP FOR THE BOILER INDUSTRY