

CONNECTIONS:				
MARK	DESCRIPTION	QTY.	SIZE	TYPE
A	STEAM OUTLET	1	12"	SCH 80 PIPE
B	SAFTEY RELIEF VALVE	1	4"	STUDDING OUTLET
C	SAFTEY RELIEF VALVE	1	4"	STUDDING OUTLET
D	FEEDWATER INLET	1	6"	300# R.F.W.N.
E	VENT VALVE	1	1 1/2"	SCH 80 PIPE
F	BOILER BLOWOFF	1	1 1/2"	300# R.F.S.W.
G	CHEMICAL FEED	1	1"	300# R.F.S.W.
H	CONTINUOUS BLOWDOWN	1	1 1/2"	300# R.F.S.W.
J	WATER COLUMN	2	1 1/2"	300# R.F.S.W.
K	DRUM LEVEL TRANSMITTER	2	1 1/2"	300# R.F.S.W.
L	AUX. LOW WATER CUTOFF	1	1"	300# R.F.S.W.
N	FURNACE PRESSURE	1	1"	SCH. 80

NOTE:  
ALL MATERIAL AND FABRICATION TO BE PER A.S.M.E. CODE SECTION I LATEST EDITION LATEST ADDENDA.

ONE (1) SHOP ASSEMBLED DISCOVERY SERIES STEAM GENERATOR  
 BOILER HEATING SURFACE: TOTAL XXX SQ. FT.  
 CONVECTION XXX SQ. FT.  
 RADIANT XXX SQ. FT.  
 DESIGN PRESSURE: XXX PSIG @ XXX° F.  
 OPERATING PRESSURE: XXX PSIG  
 CAPACITY: XXX #/HR  
 FEEDWATER TEMPERATURE: XXX° F.  
 FUELS: MAIN: XXX  
 INSTALLATION: INDOORS/OUTDOORS

ALL EXPOSED CARBON STEEL SURFACES OF THE BOILER AND CASING EXCEPT FOR THE FLUE GAS OUTLET FLANGE, DRUM HEAD COVERS AND PIPING.  
 SURFACE PREPARATION: SSPC-SP3  
 PRIMER COAT: APPLY 2 TO 3 MILS DFT OF CARBOCOAT 150 0700 GRAY  
 FINISH COAT: APPLY 2 TO 3 MILS DFT OF CARBOCOAT 8812 T135 DURING WARM WEATHER (MAXIMUM 95° F @ 80% HUMIDITY) AND CARBOTHANE 8815 T135 IN THE COLD WEATHER (MINIMUM 35° F @ 10% HUMIDITY).  
 TOTAL MILS DFT: 4 to 6

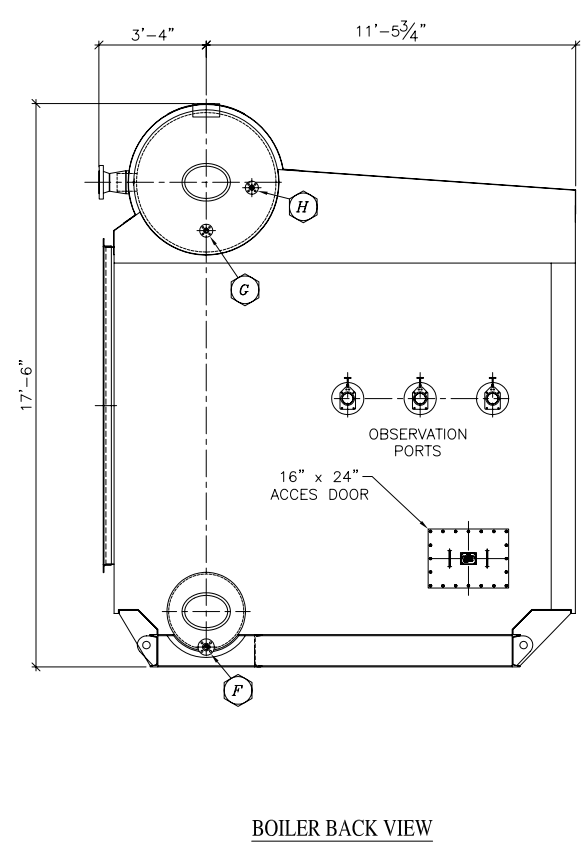
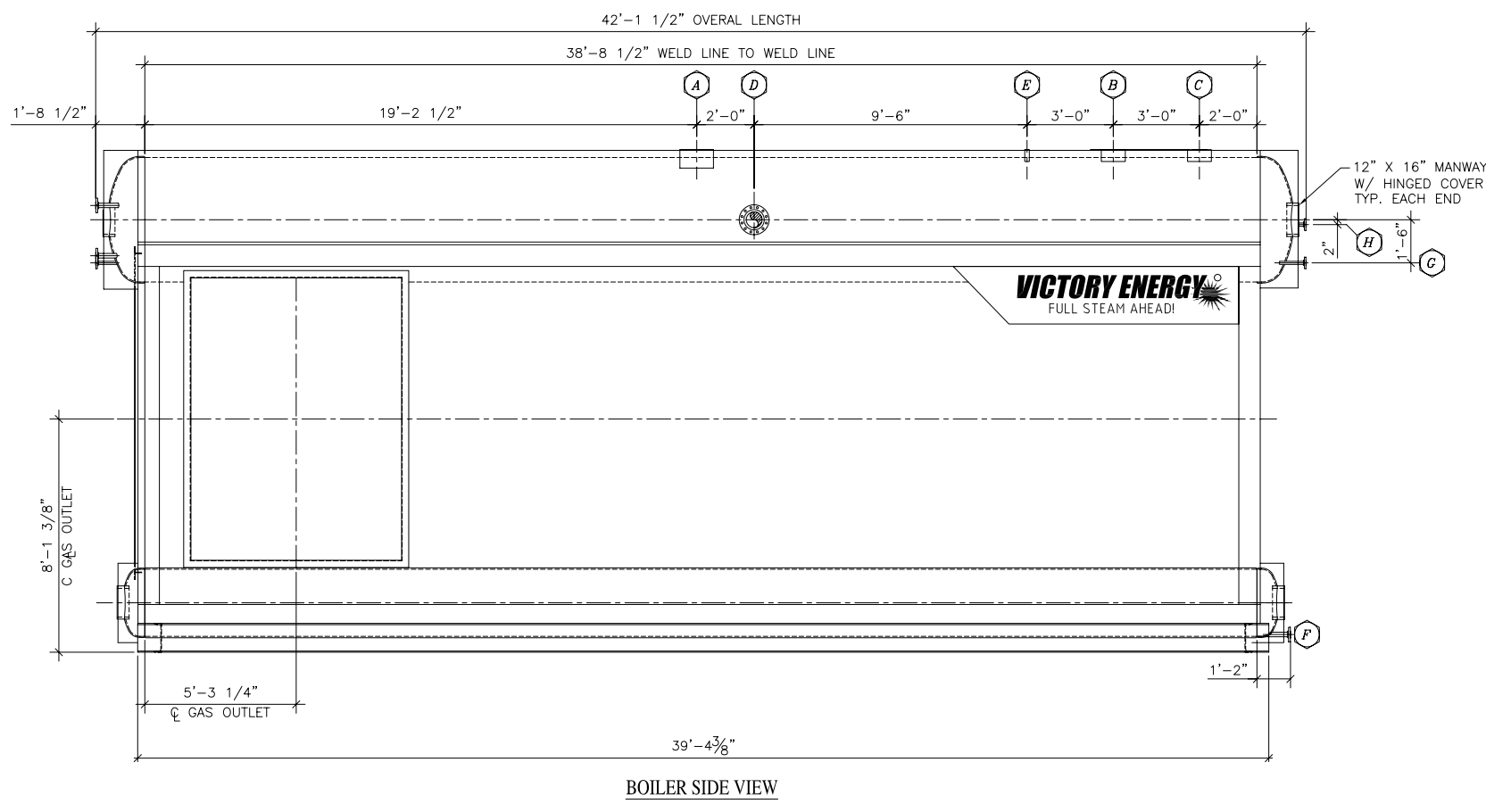
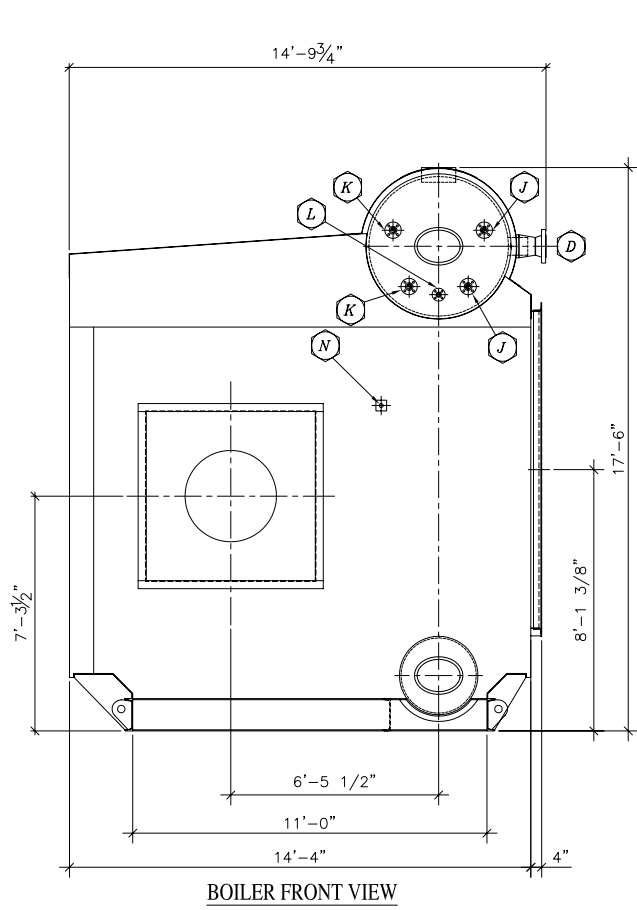
DRUM HEAD COVERS & FLUE GAS OUTLET FLANGE:  
 SURFACE PREPARATION: SSPC-SP3  
 PRIMER/FINISH COAT: CARBOCOAT 150 0700 GRAY  
 TOTAL MILS DFT: 2 to 3

PIPING COMPONENTS:  
 SURFACE PREPARATION: SSPC-SP3  
 PRIMER/FINISH: H.I.S. HI TEMP GRAY 90G07  
 TOTAL MILS DFT: 2 to 3

VALVE HANDLES:  
 SURFACE PREPARATION: SSPC-SP3  
 PRIMER COAT: CARBOCOAT 150 0700 GRAY  
 FINISH COAT: CARBOTHANE 8815 T135 YEAR AROUND.  
 TOTAL MILS DFT: 2 TO 3

HOT DUCTING (>200° F):  
 SURFACE PREPARATION: SSPC-SP3  
 PRIMER/FINISH: H.I.S. HI TEMP GRAY 90G07  
 TOTAL MILS DFT: 2 to 3

SUPPORT STRUCTURES, LADDERS, PLATFORMS, AND HANDRAILS:  
 HOT DIPPED GALVANIZED



THIS DESIGN OR DRAWING IS NOT SOLD AND IS SUBJECT TO RECALL. REPRODUCTION OR COPYING RIGHTS ARE RESERVED SOLELY TO VICTORY ENERGY OPERATIONS, L.L.C. THE DRAWING HAS BEEN DELIVERED AND RECEIVED ON THE EXPRESSED CONDITIONS THAT IT IS NOT USED IN ANY WAY AGAINST THE INTERESTS AND BENEFITS OF VICTORY ENERGY OPERATIONS, L.L.C., AND THAT THIS DRAWING AND ALL COPIES OF IT WILL BE RETURNED TO VICTORY ENERGY OPERATIONS, L.L.C. IMMEDIATELY UPON DEMAND, AND THAT ALL INFORMATION DISCLOSED BY THIS DRAWING TO THE HOLDER SHALL BE HELD IN CONFIDENCE.

rev.	by	date	chk'd	date	description
6					
5					
4					
3					
2					
1					

**VICTORY ENERGY** 10701 E. 126th St. North, Collinsville, OK 74021  
 PH: 918-274-0023 FAX: 918-274-0059

cust/proj #: DT-6  
 title: BOILER GENERAL ARRANGEMENT

by:	chk'd:	appr'd:	scale:	dwg. no.:	rev.:
date:	date:	date:	NTS	00-XXX-00	0