

CONNECTIONS:				
MARK	DESCRIPTION	QTY.	SIZE	TYPE
A	STEAM OUTLET	1	10"	300# RF LWN
B	SAFTEY RELIEF VALVE	1	4"	300# RF LWN
C	SAFTEY RELIEF VALVE	1	3"	300# RF LWN
D	FEEDWATER INLET	1	4"	300# RF
E	INTERMITTENT BLOWOFF	2	1 1/2"	300# RF
F	CHEMICAL FEED	1	1"	S.W. PIPE
G	VENT VALVE	1	1"	S.W. PIPE
H	WATER COLUMN	2	1"	S.W. PIPE
J	DRUM LEVEL TRANSMITTER	2	1"	S.W. PIPE
K	AUX. LOW WATER CUTOFF	1	1"	S.W. PIPE
L	CONTINUOUS BLOWDOWN	1	1 1/2"	S.W. PIPE
P	FURNACE PRESSURE	1	1"	N.P.T. PIPE

NOTE:  
ALL MATERIAL AND  
FABRICATION TO BE PER  
A.S.M.E. CODE SECTION I  
LATEST EDITION LATEST  
ADDENDA.

ONE (1) SHOP ASSEMBLED DISCOVERY SERIES STEAM GENERATOR  
BOILER HEATING SURFACE: TOTAL XXX SQ. FT.  
CONVECTION XXX SQ. FT.  
RADIANT XXX SQ. FT.  
DESIGN PRESSURE: XXX PSIG @ XXX' F.  
OPERATING PRESSURE: XXX PSIG  
CAPACITY: XXX #/HR  
FEEDWATER TEMPERATURE: XXX' F.  
FUELS: MAIN: XXX  
INSTALLATION: INDOORS/OUTDOORS

ALL EXPOSED CARBON STEEL SURFACES OF THE BOILER AND CASING  
EXCEPT FOR THE FLUE GAS OUTLET FLANGE, DRUM HEAD COVERS AND  
PIPING.  
SURFACE PREPARATION: SSPC-SP3  
PRIMER COAT: APPLY 2 TO 3 MILS DFT OF CARBOCOAT 150 0700 GRAY  
FINISH COAT: APPLY 2 TO 3 MILS DFT OF CARBOCOAT 8812 T135 DURING  
WARM WEATHER (MAXIMUM 95°F @ 80% HUMIDITY) AND CARBOTHANE  
8815 T135 IN THE COLD WEATHER (MINIMUM 35°F @ 10% HUMIDITY).  
TOTAL MILS DFT: 4 to 6

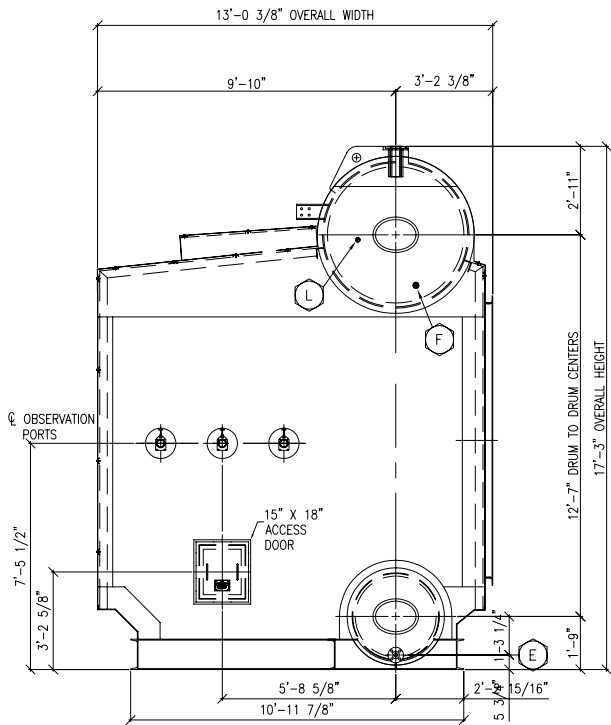
DRUM HEAD COVERS & FLUE GAS OUTLET FLANGE:  
SURFACE PREPARATION: SSPC-SP3  
PRIMER/FINISH COAT: CARBOCOAT 150 0700 GRAY  
TOTAL MILS DFT: 2 to 3

PIPING COMPONENTS:  
SURFACE PREPARATION: SSPC-SP3  
PRIMER/FINISH: H.I.S. HI TEMP GRAY 90G07  
TOTAL MILS DFT: 2 to 3

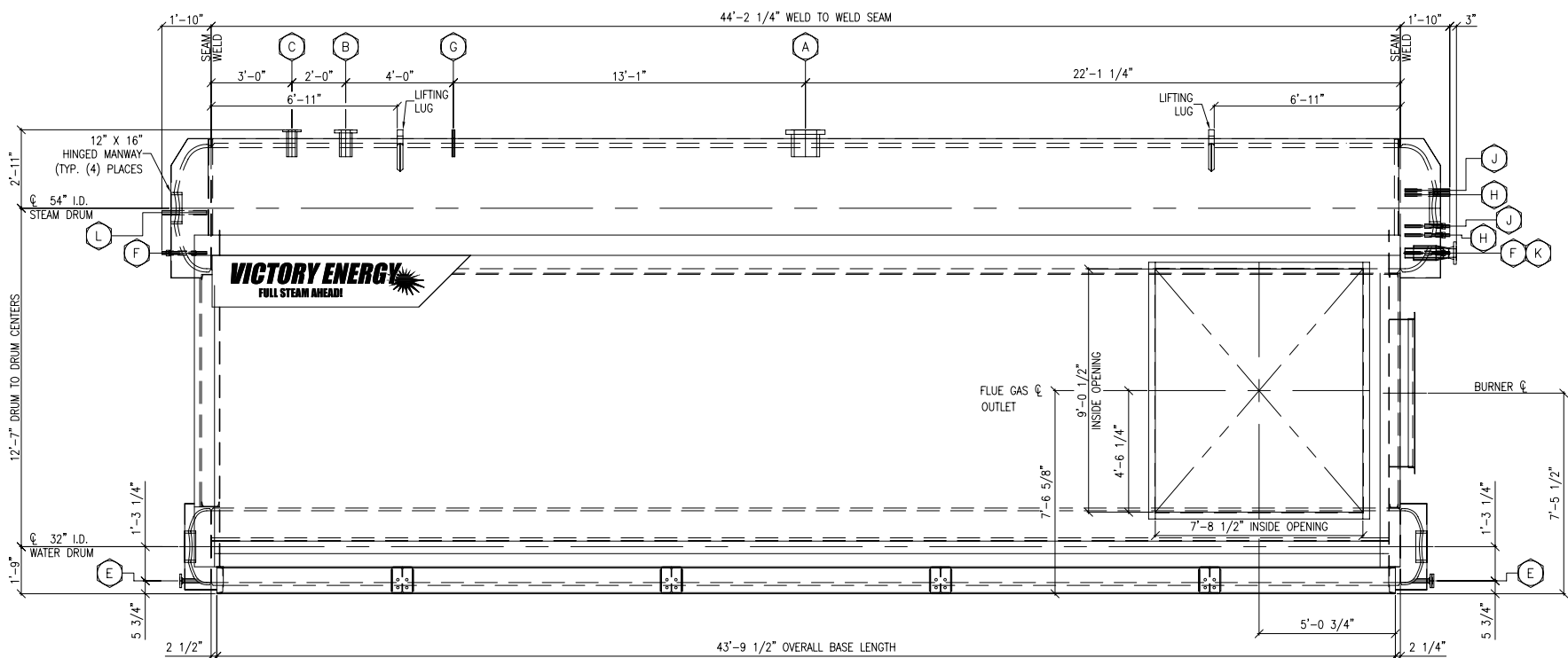
VALVE HANDLES:  
SURFACE PREPARATION: SSPC-SP3  
PRIMER COAT: CARBOCOAT 150 0700 GRAY  
FINISH COAT: CARBOTHANE 8815 T135 YEAR AROUND.  
TOTAL MILS DFT: 2 TO 3

HOT DUCTING (>200°F):  
SURFACE PREPARATION: SSPC-SP3  
PRIMER/FINISH: H.I.S. HI TEMP GRAY 90G07  
TOTAL MILS DFT: 2 to 3

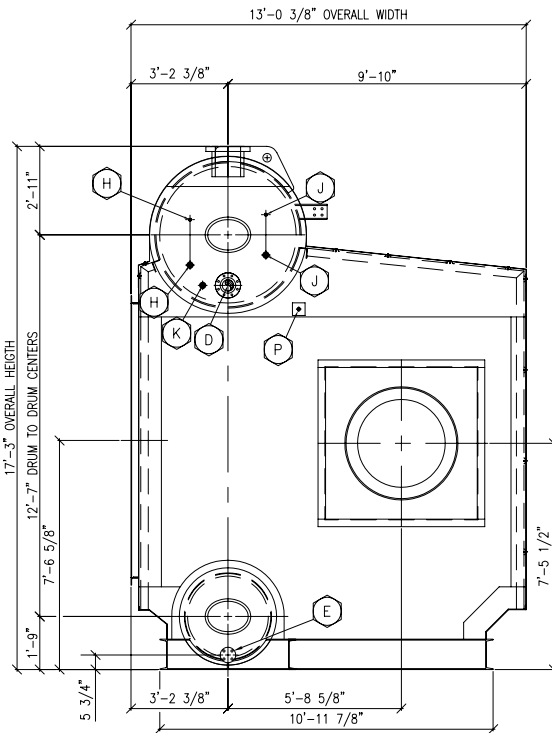
SUPPORT STRUCTURES, LADDERS, PLATFORMS, AND HANDRAILS:  
HOT DIPPED GALVANIZED



BOILER BACK VIEW



BOILER SIDE VIEW



BOILER FRONT VIEW



THIS DESIGN OR DRAWING IS NOT SOLD AND IS SUBJECT TO RECALL.  
REPRODUCTION OR COPYING RIGHTS ARE RESERVED SOLELY TO VICTORY  
ENERGY OPERATIONS, L.L.C. THE DRAWING HAS BEEN DELIVERED AND  
RECEIVED ON THE EXPRESSED CONDITIONS THAT IT IS NOT USED IN ANY WAY  
AGAINST THE INTERESTS AND BENEFITS OF VICTORY ENERGY OPERATIONS,  
L.L.C., AND THAT THIS DRAWING AND ALL COPIES OF IT WILL BE RETURNED  
TO VICTORY ENERGY OPERATIONS, L.L.C. IMMEDIATELY UPON DEMAND, AND  
THAT ALL INFORMATION DISCLOSED BY THIS DRAWING TO THE HOLDER SHALL  
BE HELD IN CONFIDENCE.

6					
5					
4					
3					
2					
1					
rev.	by	date	chk'd	date	description



10701 E. 126th St. North, Collinsville, OK 74021  
PH: 918-274-0023 FAX: 918-274-0059

cust/proj. #: DT-5

title: BOILER GENERAL ARRANGEMENT

by:	chk'd:	aprv'd:	scale:	dwg. no:	rev:
date:	date:	date:	NTS	00-XXX-00	0