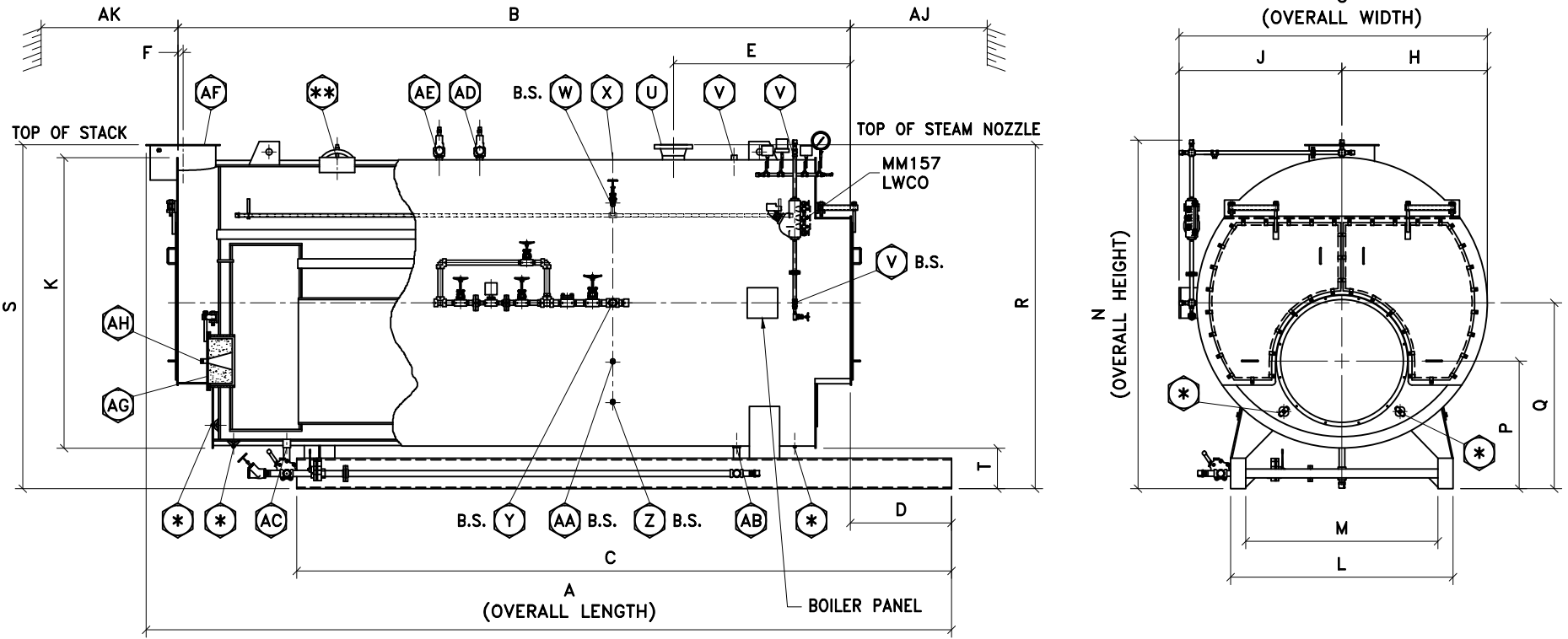


250 PSIG 3-PASS WET BACK
SCOTCH MARINE BOILER
DIMENSIONS & DATA CHART



FOR ALL BOILER MODELS

B.S. - ON BOTH SIDES OF BOILER

U - 300# WELDNECK FLG

* - (5) 3" x 4" HANDHOLE

** - (1) 12" x 16" MANWAY

DIMENSIONS CHART

BOILER MODEL		F3-200	F3-250	F3-300	F3-350	F3-400	F3-500	F3-600	F3-700	F3-750	F3-800	F3-900	F3-1000	F3-1100	F3-1200	F3-1300	F3-1400	F3-1500	F3-1600	F3-1700	F3-1800	F3-2000	F3-2200	F3-2500
BOILER HORSEPOWER		200	250	300	350	400	500	600	700	750	800	900	1000	1100	1200	1300	1400	1500	1600	1700	1800	2000	2200	2500
HEATING SURFACE (ASME) (SqFt)		1009	1272	1518	1756	2001	2504	3018	3561	3799	4071	4579	5047	5630	6126	6621	7100	7689	7838	8226	8780	9489	10475	11891
OVERALL LENGTH	A	18'-0"	20'-7"	23'-0"	23'-4"	22'-1"	25'-7"	25'-2"	24'-9"	25'-10"	27'-1"	24'-7"	26'-3"	25'-9"	27'-3"	28'-9"	27'-3"	28'-9"	33'-5"	34'-7"	36'-3"	35'-9"	38'-5"	42'-3"
SHELL LENGTH	B	13'-10"	16'-5"	18'-10"	19'-0"	17'-9"	21'-3"	20'-9"	20'-4"	21'-5"	22'-8"	20'-2"	21'-10"	21'-2"	22'-8"	24'-2"	22'-0"	23'-6"	28'-8"	29'-10"	31'-6"	30'-10"	33'-6"	37'-4"
SKID LENGTH	C	13'-7"	16'-2"	18'-7"	18'-10"	17'-6"	21'-1"	20'-6"	19'-9"	20'-10"	22'-1"	19'-7"	21'-3"	20'-7"	22'-1"	23'-7"	21'-5"	22'-11"	27'-5"	28'-7"	30'-3"	29'-6"	32'-2"	36'-0"
BOILER FRONT TO SKID FRONT	D	3'-4"	3'-4"	3'-4"	3'-4"	3'-4"	3'-4"	3'-4"	3'-4"	3'-4"	3'-4"	3'-4"	3'-4"	3'-4"	3'-4"	3'-4"	3'-4"	3'-4"	3'-4"	3'-4"	3'-4"	3'-4"	3'-4"	3'-4"
BOILER FRONT TO STEAM NOZZLE	E	4'-7"	4'-7"	4'-7"	5'-4"	5'-5"	5'-5"	5'-10"	5'-10"	5'-10"	5'-10"	5'-10"	5'-10"	5'-10"	5'-10"	5'-10"	5'-10"	5'-10"	6'-6"	6'-6"	6'-6"	7'-8"	7'-8"	7'-8"
BOILER REAR TO STACK C	F	2"	2"	2"	2"	2"	2"	2"	2"	2"	2"	2"	2"	1"	1"	1"	3"	3"	3"	3"	3"	3"	3"	3"
OVERALL WIDTH	G	7'-7"	7'-7"	7'-7"	8'-1"	9'-0"	9'-0"	9'-6"	10'-2"	10'-2"	10'-2"	10'-10"	10'-10"	11'-8"	11'-8"	11'-8"	12'-10"	12'-10"	12'-10"	12'-10"	12'-10"	13'-0"	13'-0"	13'-0"
CENTER TO SMOKEBOX O.D.	H	3'-6"	3'-6"	3'-6"	3'-9"	4'-3"	4'-3"	4'-6"	4'-10"	4'-10"	4'-10"	5'-2"	5'-2"	5'-7"	5'-7"	5'-7"	6'-2"	6'-2"	6'-2"	6'-2"	6'-2"	6'-3"	6'-3"	6'-3"
CENTER TO PANEL	J	4'-1"	4'-1"	4'-1"	4'-4"	4'-9"	4'-9"	5'-0"	5'-4"	5'-4"	5'-4"	5'-8"	5'-8"	6'-1"	6'-1"	6'-1"	6'-8"	6'-8"	6'-8"	6'-8"	6'-8"	6'-9"	6'-9"	6'-9"
JACKET DIAMETER	K	6'-10"	6'-10"	6'-10"	7'-4"	8'-3"	8'-3"	8'-9"	9'-5"	9'-5"	9'-5"	10'-1"	10'-1"	10'-11"	10'-11"	10'-11"	12'-1"	12'-1"	12'-1"	12'-1"	12'-1"	12'-3"	12'-3"	12'-3"
SKID WIDTH OUTSIDE	L	5'-6"	5'-6"	5'-6"	5'-11"	6'-10"	6'-10"	7'-4"	7'-4"	7'-4"	7'-4"	7'-11"	7'-11"	8'-9"	8'-9"	8'-9"	9'-11"	9'-11"	9'-11"	9'-11"	9'-11"	9'-11"	9'-11"	9'-11"
SKID WIDTH INSIDE	M	4'-10"	4'-10"	4'-10"	5'-3"	5'-10"	5'-10"	6'-4"	6'-4"	6'-4"	6'-4"	6'-11"	6'-11"	7'-9"	7'-9"	7'-9"	8'-11"	8'-11"	8'-11"	8'-11"	8'-11"	8'-11"	8'-11"	8'-11"
OVERALL HEIGHT	N	8'-7"	8'-7"	8'-7"	9'-1"	10'-4"	10'-4"	10'-10"	11'-6"	11'-6"	11'-6"	12'-2"	12'-2"	13'-0"	13'-0"	13'-0"	14'-2"	14'-2"	14'-2"	14'-2"	14'-2"	14'-4"	14'-4"	14'-4"
FLOOR TO CENTER OF FURNACE	P	3'-3 1/2"	3'-3 1/2"	3'-3 1/2"	3'-4 1/2"	3'-11 1/2"	3'-11 1/2"	4'-1 1/2"	4'-2 1/2"	4'-2 1/2"	4'-2 1/2"	4'-4 1/2"	4'-4 1/2"	4'-8 1/2"	4'-8 1/2"	4'-8 1/2"	5'-0 1/2"	5'-0 1/2"	5'-0 1/2"	5'-0 1/2"	5'-0 1/2"	4'-10 1/2"	4'-10 1/2"	4'-10 1/2"
FLOOR TO CENTER OF BOILER	Q	4'-6"	4'-6"	4'-6"	4'-9"	5'-6 1/2"	5'-6 1/2"	5'-9 1/2"	6'-1 1/2"	6'-1 1/2"	6'-1 1/2"	6'-5 1/2"	6'-5 1/2"	6'-10 1/2"	6'-10 1/2"	6'-10 1/2"	7'-5 1/2"	7'-5 1/2"	7'-5 1/2"	7'-5 1/2"	7'-5 1/2"	7'-6 1/2"	7'-6 1/2"	7'-6 1/2"
FLOOR TO STEAM NOZZLE	R	8'-4"	8'-4"	8'-4"	8'-11"	10'-2"	10'-2"	10'-8"	11'-4"	11'-4"	11'-4"	12'-0"	12'-0"	12'-10"	12'-10"	12'-10"	14'-0"	14'-0"	14'-0"	14'-0"	14'-0"	14'-4"	14'-4"	14'-4"
FLOOR TO STACK OUTLET	S	8'-4"	8'-4"	8'-4"	8'-11"	10'-2"	10'-2"	10'-8"	11'-4"	11'-4"	11'-4"	12'-0"	12'-0"	12'-10"	12'-10"	12'-10"	14'-0"	14'-0"	14'-0"	14'-0"	14'-0"	14'-4"	14'-4"	14'-4"
FLOOR TO BOTTOM OF SMOKEBOX	T	1'-0"	1'-0"	1'-0"	1'-0"	1'-4"	1'-4"	1'-4"	1'-4"	1'-4"	1'-4"	1'-4"	1'-4"	1'-4"	1'-4"	1'-4"	1'-4"	1'-4"	1'-4"	1'-4"	1'-4"	1'-4"	1'-4"	1'-4"
STEAM NOZZLE CONNECTION	U	4"	4"	4"	4"	6"	6"	6"	6"	6"	6"	8"	8"	8"	8"	8"	8"	8"	10"	10"	10"	10"	10"	12"
AUXILLARY CONNECTION	V	1"	1"	1"	1"	1"	1"	1"	1"	1"	1"	1"	1"	1"	1"	1"	1"	1"	1"	1"	1"	1"	1"	1"
SURFACE BLOWDOWN CONNECTION	W	1"	1"	1"	1"	1"	1"	1"	1"	1"	1"	1"	1"	1"	1"	1"	1"	1"	1"	1"	1"	1"	1"	1"
VENT CONNECTION	X	2"	2"	2"	2"	2"	2"	2"	2"	2"	2"	2"	2"	2"	2"	2"	2"	2"	2"	2"	2"	2"	2"	2"
FEEDWATER CONNECTION	Y	2"	2"	2"	2"	2"	2"	2"	2"	2"	2"	2"	2"	3"	3"	3"	3"	3"	3"	3"	3"	3"	3"	3"
LOW FIRE HOLD CONNECTION	Z	1"	1"	1"	1"	1"	1"	1"	1"	1"	1"	1"	1"	1"	1"	1"	1"	1"	1"	1"	1"	1"	1"	1"
CHEMICAL FEED CONNECTION	AA	1 1/2"	1 1/2"	1 1/2"	1 1/2"	1 1/2"	1 1/2"	1 1/2"	1 1/2"	1 1/2"	1 1/2"	1 1/2"	1 1/2"	1 1/2"	1 1/2"	1 1/2"	1 1/2"	1 1/2"	1 1/2"	1 1/2"	1 1/2"	1 1/2"	1 1/2"	1 1/2"
BLOWDOWN FRONT CONNECTION	AB	1 1/4"	1 1/4"	1 1/2"	1 1/2"	1 1/2"	1 1/2"	2"	2"	2"	2"	2"	2"	2"	2"	2"	2"	2"	2"	2"	2"	2"	2"	2"
BLOWDOWN REAR CONNECTION	AC	1 1/4"	1 1/4"	1 1/2"	1 1/2"	1 1/2"	1 1/2"	2"	2"	2"	2"	2"	2"	2"	2"	2"	2"	2"	2"	2"	2"	2"	2"	2"
SAFTEY VALVE CONNECTION	AD																							
SAFTEY VALVE CONNECTION	AE																							
FLANGED STACK I.D.	AF	20"	20"	20"	24"	24"	24"	26"	26"	26"	26"	26"	26"	28"	28"	28"	36"	36"	36"	36"	36"	40"	40"	40"
CLEAN OUT PORT	AG	Ø24"	Ø24"	Ø24"	Ø24"	Ø24"	Ø24"	Ø24"	Ø24"	Ø24"	Ø24"	Ø24"	Ø24"	Ø24"	Ø24"	Ø24"	Ø24"	Ø24"	Ø24"	Ø24"	Ø24"	Ø24"	Ø24"	Ø24"
SIGHT PORT CONNECTION	AH	2" PIPE	2" PIPE	2" PIPE	2" PIPE	2" PIPE	2" PIPE	2" PIPE	2" PIPE	2" PIPE	2" PIPE	2" PIPE	2" PIPE	2" PIPE	2" PIPE	2" PIPE	2" PIPE	2" PIPE	2" PIPE	2" PIPE	2" PIPE	2" PIPE	2" PIPE	2" PIPE
MIN. TUBE REMOVAL FRONT	AJ	12'-6"	15'-1"	17'-6"	17'-8"	16'-5"	19'-11"	19'-5"	19'-0"	20'-1"	21'-4"	18'-10"	20'-6"	19'-10"	21'-4"	22'-10"	20'-8"	22'-2"	26'-8"	27'-10"	29'-6"	28'-10"	31'-6"	35'-4"
MIN. TUBE REMOVAL REAR	AK	0"	0"	0"	0"	0"	0"	0"	0"	0"	0"	0"	0"	0"	0"	0"	0"	0"	0"	0"	0"	0"	0"	0"

DATA CHART

GROSS OUTPUT (MBH)	6634	8294	9952	11611	13270	16587	19904	23222	24880	26539	29856	33174	36491	39809	43126	46444	49761	53078	56396	59713	66348	72983	82935
STEAM OUTPUT (FROM & 212 °F) (LBS/HR)	6900	8625	10350	12075	13800	17250	20700	24150	25875	27600	31050	34500	37950	41400	44850	48300	51750	55200	58650	62100	69000	75900	86250
RATED INPUT (MBH)	8680	10660	12660	14750	16900	20910	25080	29250	31260	33270	37570	41610	45790	49820	53870	58150	62160	66630	70680	74690	83060	91120	103260
FURNACE VOLUME (CuFt)	54.1	69.85	85.31	97.95	117.86	151.53	174.09	186.54	200.01	215.55	217	241.1	283.04	309.86	336.67	367.3	396.87	427.5	513.16	549.81	565.49	627.89	717.59
TURNAROUND VOLUME (CuFt)	42.09	42.09	42.09	43.36	61.67	61.67	69.03	77.09	77.09	77.09	80.45	80.45	112.26	112.26	112.26	122.57	122.57	122.57	122.57	122.57	134.06	134.06	134.06
STEAM VOLUME (CuFt)	24.33	30.02	35.35	43.20	61.99	76.50	94.42	115.02	122.13	130.32	128.59	140.93	131	141.71	152.41	196.17	211.52	250.76	262.7	279.76	313.55	344.88	389.92
STEAM RELEASE AREA (SqFt)	46.07	56.85	66.93	73.77	81.55	100.63	107.6	115.67	122.82	131.06	122.31	134.04	132.49	143.32	154.15	160.47	173.03	205.12	214.89	228.84	233.71	257.07	290.64
GALLONS OF WATER FULL (Gal)	1562	1962	2336	2812	3249	4061	4303	4990	5313	5687	5507	6059	6726	7306	7886	8874	9601	11491	12057	12876	12460	13771	15593
GALLONS OF WATER @ NWL (Gal)	1380	1738	2072	2489	2785	3489	3596	4129	4400	4712	4545	5004	5746	6246	6745	7407	8018	9615	10092	10774	10114	11191	12676
POUNDS OF WATER FULL (Lbs)	12996	16324	19436	23393	27026	33781	35788	41504	44198	47306	45806	50396	55945	60769	65592	73816	79858	95578	100292	107026	103637	114544	129699
POUNDS OF WATER @ NWL (Lbs)	11482	14456	17237	20705	23169	29022	29913	34348	36599	39197	37805	41628	47794	51952	56109	61610	66697	79976	83947	89620	84128	93086	105438
SHIPPING WEIGHT WITHOUT BURNER (Lbs)	24,500	27,900	30,620	34,950	38,650	44,500	51,400	55,450	58,000	60,900	63,400	68,050	79,250	84,300									