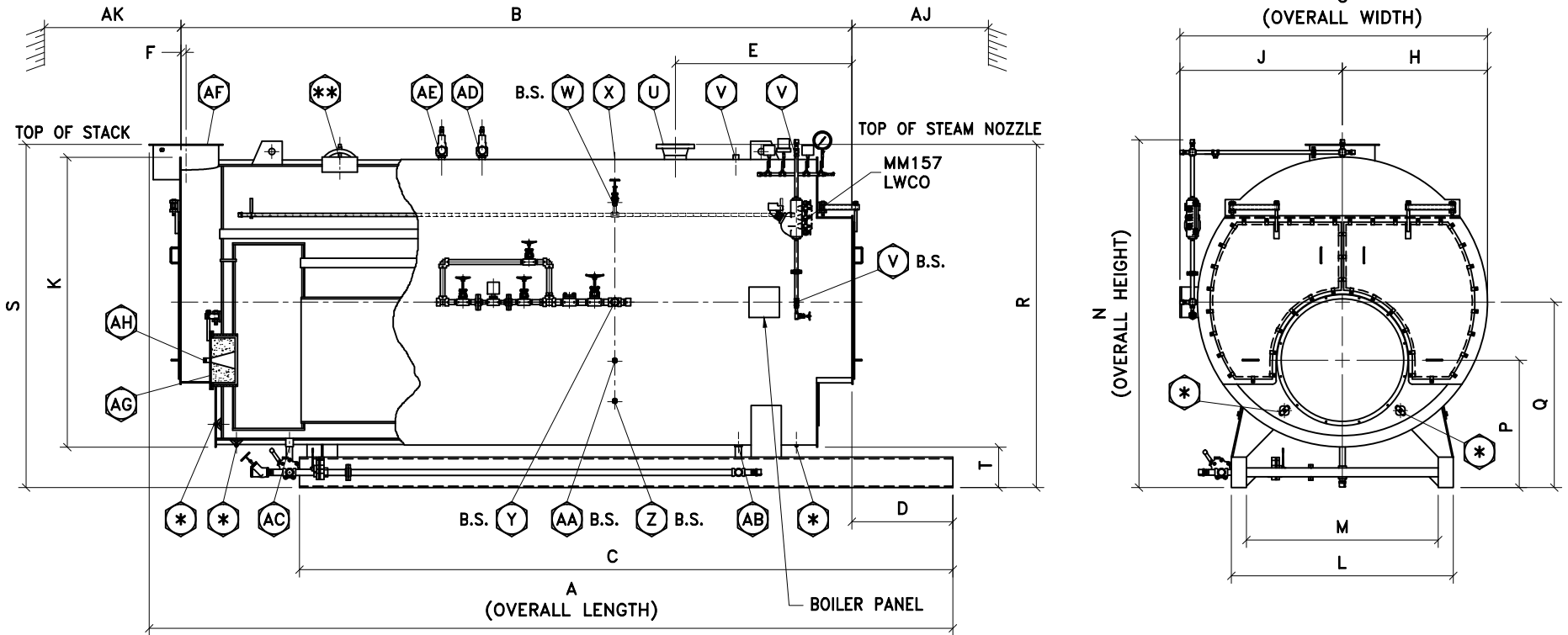


10701 E. 126th St. North,
Collinsville, OK 74021
PHONE: 918-274-0023
FAX: 918-274-0059



200 PSIG 3-PASS WET BACK
SCOTCH MARINE BOILER
DIMENSIONS & DATA CHART



FOR ALL BOILER MODELS	
B.S. - ON BOTH SIDES OF BOILER	
U - 300# WELDNECK FLG	
* - (5) 3" x 4" HANDHOLE	
** - (1) 12" x 16" MANWAY	

DIMENSIONS CHART

BOILER MODEL		F3-200	F3-250	F3-300	F3-350	F3-400	F3-500	F3-600	F3-700	F3-750	F3-800	F3-900	F3-1000	F3-1100	F3-1200	F3-1300	F3-1400	F3-1500	F3-1600	F3-1700	F3-1800	F3-2000	F3-2200	F3-2500
BOILER HORSEPOWER		200	250	300	350	400	500	600	700	750	800	900	1000	1100	1200	1300	1400	1500	1600	1700	1800	2000	2200	2500
HEATING SURFACE (ASME) (SqFt)		1009	1272	1518	1757	2001	2504	3019	3562	3799	4073	4581	5049	5633	6128	6624	7100	7691	7841	8229	8783	9492	10478	11896
OVERALL LENGTH	A	18'-0"	20'-7"	23'-0"	23'-4"	22'-1"	25'-7"	25'-2"	24'-9"	25'-10"	27'-1"	24'-7"	26'-3"	25'-9"	27'-3"	28'-9"	27'-3"	28'-9"	33'-5"	34'-7"	36'-3"	35'-9"	38'-5"	42'-3"
SHELL LENGTH	B	13'-10"	16'-5"	18'-10"	19'-0"	17'-9"	21'-3"	20'-9"	20'-4"	21'-5"	22'-8"	20'-2"	21'-10"	21'-2"	22'-8"	24'-2"	22'-0"	23'-6"	28'-8"	29'-10"	31'-6"	30'-10"	33'-6"	37'-4"
SKID LENGTH	C	13'-7"	16'-2"	18'-7"	18'-10"	17'-6"	21'-1"	20'-6"	19'-9"	20'-10"	22'-1"	19'-7"	21'-3"	20'-7"	22'-1"	23'-7"	21'-5"	22'-11"	27'-5"	28'-7"	30'-3"	29'-6"	32'-2"	36'-0"
BOILER FRONT TO SKID FRONT	D	3'-4"	3'-4"	3'-4"	3'-4"	3'-4"	3'-4"	3'-4"	3'-4"	3'-4"	3'-4"	3'-4"	3'-4"	3'-4"	3'-4"	3'-4"	3'-4"	3'-4"	3'-4"	3'-4"	3'-4"	3'-4"	3'-4"	3'-4"
BOILER FRONT TO STEAM NOZZLE	E	4'-7"	4'-7"	4'-7"	5'-4"	5'-5"	5'-5"	5'-10"	5'-10"	5'-10"	5'-10"	5'-10"	5'-10"	5'-10"	5'-10"	5'-10"	5'-10"	5'-10"	6'-6"	6'-6"	6'-6"	7'-8"	7'-8"	7'-8"
BOILER REAR TO STACK C	F	2"	2"	2"	2"	2"	2"	2"	2"	2"	2"	2"	2"	1"	1"	1"	3"	3"	3"	3"	3"	3"	3"	3"
OVERALL WIDTH	G	7'-7"	7'-7"	7'-7"	8'-1"	9'-0"	9'-0"	9'-6"	10'-2"	10'-2"	10'-2"	10'-10"	10'-10"	11'-8"	11'-8"	11'-8"	12'-10"	12'-10"	12'-10"	12'-10"	12'-10"	13'-0"	13'-0"	13'-0"
CENTER TO SMOKEBOX O.D.	H	3'-6"	3'-6"	3'-6"	3'-9"	4'-3"	4'-3"	4'-6"	4'-10"	4'-10"	4'-10"	5'-2"	5'-2"	5'-7"	5'-7"	5'-7"	6'-2"	6'-2"	6'-2"	6'-2"	6'-2"	6'-3"	6'-3"	6'-3"
CENTER TO PANEL	J	4'-1"	4'-1"	4'-1"	4'-4"	4'-9"	4'-9"	5'-0"	5'-4"	5'-4"	5'-4"	5'-8"	5'-8"	6'-1"	6'-1"	6'-1"	6'-8"	6'-8"	6'-8"	6'-8"	6'-8"	6'-9"	6'-9"	6'-9"
JACKET DIAMETER	K	6'-10"	6'-10"	6'-10"	7'-4"	8'-3"	8'-3"	8'-9"	9'-5"	9'-5"	9'-5"	10'-1"	10'-1"	10'-11"	10'-11"	10'-11"	12'-1"	12'-1"	12'-1"	12'-1"	12'-1"	12'-3"	12'-3"	12'-3"
SKID WIDTH OUTSIDE	L	5'-6"	5'-6"	5'-6"	5'-11"	6'-10"	6'-10"	7'-4"	7'-4"	7'-4"	7'-4"	7'-11"	7'-11"	8'-9"	8'-9"	8'-9"	9'-11"	9'-11"	9'-11"	9'-11"	9'-11"	9'-11"	9'-11"	9'-11"
SKID WIDTH INSIDE	M	4'-10"	4'-10"	4'-10"	5'-3"	5'-10"	5'-10"	6'-4"	6'-4"	6'-4"	6'-4"	6'-11"	6'-11"	7'-9"	7'-9"	7'-9"	8'-11"	8'-11"	8'-11"	8'-11"	8'-11"	8'-11"	8'-11"	8'-11"
OVERALL HEIGHT	N	8'-7"	8'-7"	8'-7"	9'-1"	10'-4"	10'-4"	10'-10"	11'-6"	11'-6"	11'-6"	12'-2"	12'-2"	13'-0"	13'-0"	13'-0"	14'-2"	14'-2"	14'-2"	14'-2"	14'-2"	14'-4"	14'-4"	14'-4"
FLOOR TO CENTER OF FURNACE	P	3'-3 1/2"	3'-3 1/2"	3'-3 1/2"	3'-4 1/2"	3'-11 1/2"	3'-11 1/2"	4'-1 1/2"	4'-2 1/2"	4'-2 1/2"	4'-2 1/2"	4'-4 1/2"	4'-4 1/2"	4'-8 1/2"	4'-8 1/2"	4'-8 1/2"	5'-0 1/2"	5'-0 1/2"	5'-0 1/2"	5'-0 1/2"	5'-0 1/2"	4'-10 1/2"	4'-10 1/2"	4'-10 1/2"
FLOOR TO CENTER OF BOILER	Q	4'-6"	4'-6"	4'-6"	4'-9"	5'-6 1/2"	5'-6 1/2"	5'-9 1/2"	6'-1 1/2"	6'-1 1/2"	6'-1 1/2"	6'-5 1/2"	6'-5 1/2"	6'-10 1/2"	6'-10 1/2"	6'-10 1/2"	7'-5 1/2"	7'-5 1/2"	7'-5 1/2"	7'-5 1/2"	7'-5 1/2"	7'-6 1/2"	7'-6 1/2"	7'-6 1/2"
FLOOR TO STEAM NOZZLE	R	8'-4"	8'-4"	8'-4"	8'-11"	10'-2"	10'-2"	10'-8"	11'-4"	11'-4"	11'-4"	12'-0"	12'-0"	12'-10"	12'-10"	12'-10"	14'-0"	14'-0"	14'-0"	14'-0"	14'-0"	14'-4"	14'-4"	14'-4"
FLOOR TO STACK OUTLET	S	8'-4"	8'-4"	8'-4"	8'-11"	10'-2"	10'-2"	10'-8"	11'-4"	11'-4"	11'-4"	12'-0"	12'-0"	12'-10"	12'-10"	12'-10"	14'-0"	14'-0"	14'-0"	14'-0"	14'-0"	14'-4"	14'-4"	14'-4"
FLOOR TO BOTTOM OF SMOKEBOX	T	1'-0"	1'-0"	1'-0"	1'-0"	1'-4"	1'-4"	1'-4"	1'-4"	1'-4"	1'-4"	1'-4"	1'-4"	1'-4"	1'-4"	1'-4"	1'-4"	1'-4"	1'-4"	1'-4"	1'-4"	1'-4"	1'-4"	1'-4"
STEAM NOZZLE CONNECTION	U	4"	4"	6"	6"	6"	6"	8"	8"	8"	8"	8"	8"	10"	10"	10"	10"	10"	10"	10"	12"	12"	12"	14"
AUXILLARY CONNECTION	V	1"	1"	1"	1"	1"	1"	1"	1"	1"	1"	1"	1"	1"	1"	1"	1"	1"	1"	1"	1"	1"	1"	1"
SURFACE BLOWDOWN CONNECTION	W	1"	1"	1"	1"	1"	1"	1"	1"	1"	1"	1"	1"	1"	1"	1"	1"	1"	1"	1"	1"	1"	1"	1"
VENT CONNECTION	X	2"	2"	2"	2"	2"	2"	2"	2"	2"	2"	2"	2"	2"	2"	2"	2"	2"	2"	2"	2"	2"	2"	2"
FEEDWATER CONNECTION	Y	2"	2"	2"	2"	2"	2"	2"	2"	2"	2"	2"	2"	3"	3"	3"	3"	3"	3"	3"	3"	3"	3"	3"
LOW FIRE HOLD CONNECTION	Z	1"	1"	1"	1"	1"	1"	1"	1"	1"	1"	1"	1"	1"	1"	1"	1"	1"	1"	1"	1"	1"	1"	1"
CHEMICAL FEED CONNECTION	AA	1 1/2"	1 1/2"	1 1/2"	1 1/2"	1 1/2"	1 1/2"	1 1/2"	1 1/2"	1 1/2"	1 1/2"	1 1/2"	1 1/2"	1 1/2"	1 1/2"	1 1/2"	1 1/2"	1 1/2"	1 1/2"	1 1/2"	1 1/2"	1 1/2"	1 1/2"	1 1/2"
BLOWDOWN FRONT CONNECTION	AB	1 1/4"	1 1/4"	1 1/2"	1 1/2"	1 1/2"	1 1/2"	2"	2"	2"	2"	2"	2"	2"	2"	2"	2"	2"	2"	2"	2"	2"	2"	2"
BLOWDOWN REAR CONNECTION	AC	1 1/4"	1 1/4"	1 1/2"	1 1/2"	1 1/2"	1 1/2"	2"	2"	2"	2"	2"	2"	2"	2"	2"	2"	2"	2"	2"	2"	2"	2"	2"
SAFTEY VALVE CONNECTION	AD																							
SAFTEY VALVE CONNECTION	AE																							
FLANGED STACK I.D.	AF	20"	20"	20"	24"	24"	24"	26"	26"	26"	26"	26"	26"	28"	28"	28"	36"	36"	36"	36"	36"	40"	40"	40"
CLEAN OUT PORT	AG	Ø24"	Ø24"	Ø24"	Ø24"	Ø24"	Ø24"	Ø24"	Ø24"	Ø24"	Ø24"	Ø24"	Ø24"	Ø24"	Ø24"	Ø24"	Ø24"	Ø24"	Ø24"	Ø24"	Ø24"	Ø24"	Ø24"	Ø24"
SIGHT PORT CONNECTION	AH	2" PIPE	2" PIPE	2" PIPE	2" PIPE	2" PIPE	2" PIPE	2" PIPE	2" PIPE	2" PIPE	2" PIPE	2" PIPE	2" PIPE	2" PIPE	2" PIPE	2" PIPE	2" PIPE	2" PIPE	2" PIPE	2" PIPE	2" PIPE	2" PIPE	2" PIPE	2" PIPE
MIN. TUBE REMOVAL FRONT	AJ	12'-6"	15'-1"	17'-6"	17'-8"	16'-5"	19'-11"	19'-5"	19'-0"	20'-1"	21'-4"	18'-10"	20'-6"	19'-10"	21'-4"	22'-10"	20'-8"	22'-2"	26'-8"	27'-10"	29'-6"	28'-10"	31'-6"	35'-4"
MIN. TUBE REMOVAL REAR	AK	0"	0"	0"	0"	0"	0"	0"	0"	0"	0"	0"	0"	0"	0"	0"	0"	0"	0"	0"	0"	0"	0"	0"

DATA CHART

GROSS OUTPUT (MBH)	6663	8328	9994	11659	13325	16656	19987	23318	24983	26649	29980	33311	36642	39974	43305	46636	49967	53298	56629	59960	66623	73285	83278
STEAM OUTPUT (FROM & 212 °F) (LBS/HR)	6900	8625	10350	12075	13800	17250	20700	24150	25875	27600	31050	34500	37950	41400	44850	48300	51750	55200	58650	62100	69000	75900	86250
RATED INPUT (MBH)	8630	10590	12590	14670	16800	20780	24930	29070	31070	33070	37340	41350	45510	49520	53540	57800	61780	66210	70250	74230	82520	90530	102630
FURNACE VOLUME (CuFt)	54.89	70.87	86.56	99.31	119.27	153.34	176	188.5	202.11	217.82	221.22	245.8	288.01	315.29	342.58	370.21	403.20	495.21	521.27	558.51	574.16	637.51	728.59
TURNAROUND VOLUME (CuFt)	42.09	42.09	42.09	43.36	61.67	61.67	69.03	77.09	77.09	77.09	80.45	80.45	113.33	113.33	113.33	122.57	122.57	122.57	122.57	122.57	134.06	134.06	134.06
STEAM VOLUME (CuFt)	24.33	30.02	35.35	43.20	61.99	76.50	94.42	115.02	122.13	130.32	128.59	140.93	131.15	141.86	152.56	196.17	211.52	250.76	262.7	279.76	313.55	344.88	389.92
STEAM RELEASE AREA (SqFt)	46.07	56.85	66.93	73.77	81.55	100.63	107.6	115.67	122.82	131.06	122.31	134.04	132.64	143.47	154.3	160.47	173.03	205.12	214.89	228.84	233.71	257.07	290.64
GALLONS OF WATER FULL (Gal)	1566	1966	2340	2816	3253	4066	4306	4998	5322	5695	5511	6063	6743	7323	7904	8889	9615	11505	12072	12882	12470	13755	15604
GALLONS OF WATER @ NWL (Gal)	1384	1741	2076	2493	2789	3493	3600	4138	4408	4721	4549	5008	5763	6262	6762	7421	8033	9629	10107	10789	10124	11176	12687
POUNDS OF WATER FULL (Lbs)	13022	16349	19462	23419	27057	33812	35820	41570	44264	47371	45838	50429	56091	60915	65738	73936	79978	95698	100412	107146	103724	114416	129785
POUNDS OF WATER @ NWL (Lbs)	11508	14481	17263	20730	23200	29053	29946	34413	36664	39262	37837	41660	47931	52088	56246	61731	66818	80096	84067	89740	84214	92957	105525
SHIPPING WEIGHT WITHOUT BURNER (Lbs)	24,000	27,150	29,800	32,250	35,820	41,050	47,750	51,400	53,800	56,400	58,400	62,500	72,000	76,600	81,250	88,700	94,150	103,900	107,900	113,600	116,100	125,900	139,900

NOTES:

- VICTORY ENERGY, L.L.C. RESERVES THE RIGHT TO CHANGE DIMENSION DUE TO PRODUCT REVISION OR JOB REQUIREMENTS.
- PRELIMINARY DIMENSIONS AND MAY BE USED FOR LAYOUT ONLY.
- BOILER INSULATED WITH 2"-8# DENSITY MINERAL FIBER INSULATION WITH 22 GAUGE STEEL JACKET.

THIS DESIGN OR DRAWING IS NOT SOLD AND IS SUBJECT TO RECALL. REPRODUCTION OR COPYING RIGHTS ARE RESERVED SOLELY TO VICTORY ENERGY OPERATIONS, L.L.C. THE DRAWING HAS BEEN DELIVERED AND RECEIVED ON THE EXPRESSED CONDITIONS THAT IT IS NOT USED IN ANY WAY AGAINST THE INTERESTS AND BENEFITS OF VICTORY ENERGY OPERATIONS, L.L.C., AND THAT THIS DRAWING AND ALL COPIES OF IT WILL BE RETURNED TO VICTORY ENERGY OPERATIONS, L.L.C. IMMEDIATELY UPON DEMAND, AND THAT ALL INFORMATION DISCLOSED BY THIS DRAWING TO THE HOLDER SHALL BE HELD IN CONFIDENCE.