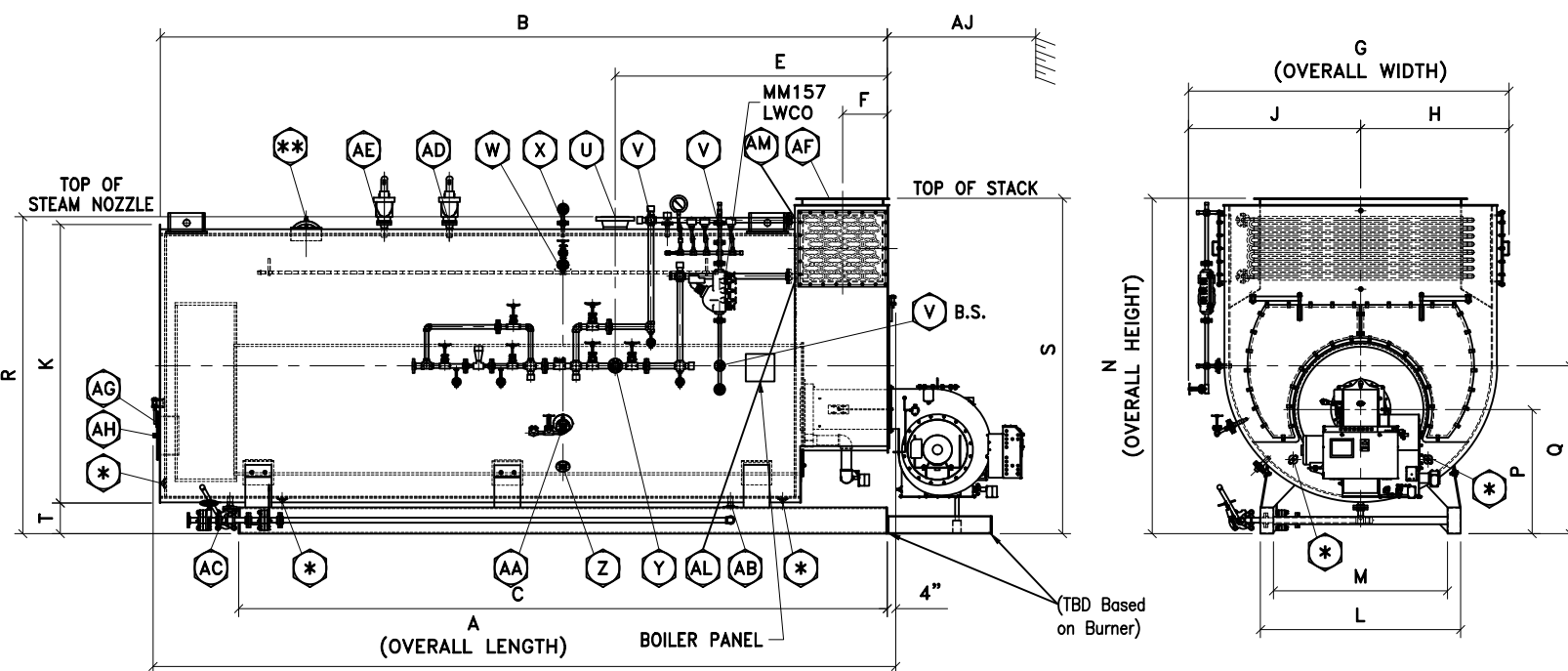




250 PSIG 2-PASS WET BACK
 SCOTCH MARINE BOILER
 DIMENSIONS & DATA CHART



FOR ALL BOILER MODELS
 B.S. - ON BOTH SIDES OF BOILER
 U - 300# WELDNECK FLG
 * - (5) 3" x 4" HANDHOLE
 ** - (1) 12" x 16" MANWAY

DIMENSIONS CHART

BOILER MODEL	F2-200	F2-250	F2-300	F2-350	F2-400	F2-500	F2-600	F2-700	F2-750	F2-800	F2-900	F2-1000	F2-1100	F2-1200	F2-1300	F2-1400	F2-1500	F2-1600	F2-1700	F2-1800	F2-2000	F2-2200	F2-2500	
BOILER HORSEPOWER	200	250	300	350	400	500	600	700	750	800	900	1000	1100	1200	1300	1400	1500	1600	1700	1800	2000	2200	2500	
HEATING SURFACE (ASME) (SqFt)	828.56	1017	1354	1437	1622	2096	2418	2886	3078	3300	3692	4170	4292	4686	4970	5230	5755	5809	6161	6513	7565	8107	9191	
OVERALL LENGTH	A	13'-11"	16'-1"	16'-9"	16'-6"	18'-0"	18'-0"	19'-11"	20'-8"	21'-8"	22'-10"	21'-2"	23'-2"	22'-2"	23'-8"	24'-9"	25'-9"	27'-9"	27'-9"	29'-1"	30'-4"	27'-4"	28'-11"	31'-11"
SHELL LENGTH	B	13'-6"	15'-8"	16'-4"	16'-2"	17'-7"	17'-7"	19'-7"	20'-4"	21'-5"	22'-5"	20'-9"	22'-9"	21'-9"	23'-4"	24'-4"	25'-4"	27'-4"	27'-4"	28'-8"	30'-1"	27'-1"	28'-6"	31'-6"
SKID LENGTH	C	13'-1"	15'-2"	15'-10"	15'-8"	17'-1"	17'-1"	19'-1"	19'-10"	20'-11"	22'-1"	20'-3"	22'-3"	21'-3"	22'-10"	23'-10"	24'-10"	26'-10"	26'-10"	28'-2"	29'-7"	26'-7"	28'-0"	31'-0"
BOILER FRONT TO SKID FRONT	D	0"	0"	0"	0"	0"	0"	0"	0"	0"	0"	0"	0"	0"	0"	0"	0"	0"	0"	0"	0"	0"	0"	0"
BOILER FRONT TO STEAM NOZZLE	E	4'-7"	4'-7"	4'-7"	5'-4"	5'-5"	5'-5"	5'-10"	5'-10"	5'-10"	5'-10"	5'-10"	5'-10"	5'-10"	5'-10"	5'-10"	5'-10"	5'-10"	6'-6"	6'-6"	6'-6"	7'-8"	7'-8"	7'-8"
BOILER FRONT TO STACK	F	11 3/8"	11 3/8"	11 3/8"	1'-2"	1'-2"	1'-12"	1'-2"	1'-7"	1'-7"	1'-7"	1'-7"	1'-7"	1'-7"	1'-7"	1'-7"	1'-7"	1'-7"	1'-7"	1'-7"	1'-7"	1'-11"	1'-11"	1'-11"
OVERALL WIDTH	G	7'-4"	7'-4"	7'-8"	8'-2"	8'-2"	8'-12"	8'-12"	9'-4"	9'-4"	9'-4"	9'-10"	10'-4"	10'-4"	10'-8"	10'-8"	10'-8"	10'-12"	10'-12"	10'-12"	11'-12"	11'-12"	11'-12"	11'-12"
CENTER TO SMOKEBOX O.D.	H	3'-8"	3'-8"	3'-9"	4'-1"	4'-1"	4'-3"	4'-3"	4'-8"	4'-8"	4'-8"	4'-11"	4'-11"	5'-2"	5'-4"	5'-4"	5'-6"	5'-6"	5'-6"	5'-6"	5'-6"	6'-0"	6'-0"	6'-0"
CENTER TO PANEL	J	4'-6"	4'-6"	4'-7"	4'-11"	4'-11"	5'-1"	5'-1"	5'-6"	5'-6"	5'-6"	5'-9"	5'-9"	6'-0"	6'-0"	6'-2"	6'-2"	6'-2"	6'-2"	6'-4"	6'-4"	6'-10"	6'-10"	6'-10"
JACKET DIAMETER	K	7'-1"	7'-1"	7'-4"	7'-9"	7'-9"	8'-7"	8'-7"	9'-1"	9'-1"	9'-1"	9'-6"	9'-6"	10'-1"	10'-1"	10'-4"	10'-4"	10'-4"	10'-7"	10'-7"	10'-7"	11'-7"	11'-7"	11'-7"
SKID WIDTH OUTSIDE	L	5'-6"	5'-6"	5'-6"	5'-11"	6'-10"	6'-10"	7'-4"	7'-4"	7'-4"	7'-4"	7'-11"	7'-11"	8'-9"	8'-9"	8'-9"	9'-11"	9'-11"	9'-11"	9'-11"	9'-11"	9'-11"	9'-11"	9'-11"
SKID WIDTH INSIDE	M	4'-10"	4'-10"	4'-10"	5'-3"	5'-10"	5'-10"	6'-4"	6'-4"	6'-4"	6'-4"	6'-11"	6'-11"	7'-9"	7'-9"	7'-9"	8'-11"	8'-11"	8'-11"	8'-11"	8'-11"	8'-11"	8'-11"	8'-11"
OVERALL HEIGHT	N	8'-11"	8'-11"	9'-3 1/4"	9'-10"	9'-10"	10'-8"	10'-8"	10'-11"	10'-11"	10'-11"	11'-6"	11'-6"	11'-11"	11'-11"	12'-4"	12'-4"	12'-4"	12'-7"	12'-7"	12'-7"	13'-7"	13'-7"	13'-7"
FLOOR TO CENTER OF FURNACE	P	3'-5"	4'-1"	4'-2"	4'-3"	4'-3"	4'-7"	4'-7"	4'-8"	4'-8"	4'-8"	4'-9"	5'-1"	5'-1"	5'-2"	5'-2"	5'-2"	5'-4"	5'-4"	5'-4"	5'-7"	5'-7"	5'-7"	5'-7"
FLOOR TO CENTER OF BOILER	Q	4'-7"	5-1"	5-2"	5-7"	5-7"	6-1"	6-1"	6-3"	6-3"	6-3"	6-8"	6-8"	6-9"	6-9"	6-10 1/2"	6-10 1/2"	6-10 1/2"	7-1"	7-1"	7-1"	7-6 1/2"	7-6 1/2"	7-6 1/2"
FLOOR TO STEAM NOZZLE	R	8'-7"	8'-7"	8'-11"	9'-5"	9'-5"	10'-3"	10'-3"	10'-7"	10'-7"	10'-7"	11'-1"	11'-1"	11'-7"	11'-7"	11'-11"	11'-11"	11'-11"	12'-3"	12'-3"	12'-3"	13'-3"	13'-3"	13'-3"
FLOOR TO STACK OUTLET	S	8'-7"	8'-7"	8'-11"	9'-5"	9'-5"	10'-3"	10'-3"	10'-7"	10'-7"	10'-7"	11'-1"	11'-1"	11'-7"	11'-7"	11'-11"	11'-11"	11'-11"	12'-3"	12'-3"	12'-3"	13'-3"	13'-3"	13'-3"
FLOOR TO BOTTOM OF SMOKEBOX	T	1'-0"	1'-0"	1'-0"	1'-0"	1'-0"	1'-0"	1'-0"	1'-0"	1'-0"	1'-0"	1'-0"	1'-0"	1'-0"	1'-0"	1'-0"	1'-0"	1'-0"	1'-0"	1'-0"	1'-0"	1'-0"	1'-0"	1'-0"
STEAM NOZZLE CONNECTION	U	4"	4"	4"	4"	6"	6"	6"	6"	6"	6"	8"	8"	8"	8"	8"	8"	10"	10"	10"	10"	10"	10"	12"
AUXILIARY CONNECTION	V	1"	1"	1"	1"	1"	1"	1"	1"	1"	1"	1"	1"	1"	1"	1"	1"	1"	1"	1"	1"	1"	1"	1"
SURFACE BLOWDOWN CONNECTION	W	1"	1"	1"	1"	1"	1"	1"	1"	1"	1"	1"	1"	1"	1"	1"	1"	1"	1"	1"	1"	1"	1"	1"
VENT CONNECTION	X	2"	2"	2"	2"	2"	2"	2"	2"	2"	2"	2"	2"	2"	2"	2"	2"	2"	2"	2"	2"	2"	2"	2"
FEEDWATER CONNECTION	Y	2"	2"	2"	2"	2"	2"	2"	2"	2"	2"	2"	3"	3"	3"	3"	3"	3"	3"	3"	3"	3"	3"	3"
LOW FIRE HOLD CONNECTION	Z	1"	1"	1"	1"	1"	1"	1"	1"	1"	1"	1"	1"	1"	1"	1"	1"	1"	1"	1"	1"	1"	1"	1"
CHEMICAL FEED CONNECTION	AA	1 1/2"	1 1/2"	1 1/2"	1 1/2"	1 1/2"	1 1/2"	1 1/2"	1 1/2"	1 1/2"	1 1/2"	1 1/2"	1 1/2"	1 1/2"	1 1/2"	1 1/2"	1 1/2"	1 1/2"	1 1/2"	1 1/2"	1 1/2"	1 1/2"	1 1/2"	1 1/2"
BLOWDOWN FRONT CONNECTION	AB	1 1/4"	1 1/4"	1 1/2"	1 1/2"	1 1/2"	1 1/2"	2"	2"	2"	2"	2"	2"	2"	2"	2"	2"	2"	2"	2"	2"	2"	2"	2"
BLOWDOWN REAR CONNECTION	AC	1 1/4"	1 1/4"	1 1/2"	1 1/2"	1 1/2"	1 1/2"	2"	2"	2"	2"	2"	2"	2"	2"	2"	2"	2"	2"	2"	2"	2"	2"	2"
SAFETY VALVE CONNECTION	AD																							
STACK WIDTH	AE	22.75"	22.75"	22.75"	27.625"	27.625"	27.625"	27.625"	36.125"	36.125"	36.125"	36.125"	36.125"	36.125"	36.75"	36.75"	36.75"	36.75"	36.75"	36.75"	44.625"	44.625"	44.625"	
STACK LENGTH	AF	4'-10"	4'-10"	4'-10"	4'-10"	4'-10"	4'-10"	4'-10"	4'-10"	4'-10"	4'-10"	4'-10"	4'-10"	4'-10"	4'-10"	4'-10"	4'-10"	4'-10"	4'-10"	4'-10"	4'-10"	4'-10"	4'-10"	4'-10"
CLEAN OUT PORT	AG	#24"	#24"	#24"	#24"	#24"	#24"	#24"	#24"	#24"	#24"	#24"	#24"	#24"	#24"	#24"	#24"	#24"	#24"	#24"	#24"	#24"	#24"	#24"
SIGHT PORT CONNECTION	AH	2" PIPE	2" PIPE	2" PIPE	2" PIPE	2" PIPE	2" PIPE	2" PIPE	2" PIPE	2" PIPE	2" PIPE	2" PIPE	2" PIPE	2" PIPE	2" PIPE	2" PIPE	2" PIPE	2" PIPE	2" PIPE	2" PIPE	2" PIPE	2" PIPE	2" PIPE	2" PIPE
MIN. TUBE REMOVAL FRONT	AJ	10'-2"	12'-4"	12'-10"	12'-4"	13'-10"	13'-10"	15'-10"	15'-10"	16'-10"	18'-0"	16'-4"	18'-4"	17'-4"	18'-10"	19'-10"	20'-10"	22'-10"	22'-10"	24'-2"	25'-2"	21'-10"	23'-0"	26'-4"
ECONOMIZER INLET CONN	AL	2"	2"	2"	2"	2"	2"	2"	2"	2"	2"	2"	2"	2"	2"	2"	2"	2"	2"	2"	2"	2"	2"	2"
ECONOMIZER OUTLET CONN	AM	2"	2"	2"	2"	2"	2"	2"	2"	2"	2"	2"	2"	2"	2"	2"	2"	2"	2"	2"	2"	2"	2"	2"

DATA CHART

	(MBH)	6634	8294	9952	11611	13269	16588	19904	23222	24880	26540	29860	33175	36492	39810	43126	46444	49761	53078	56396	59713	66348	72984	82936
GROSS OUTPUT	(MBH)	6634	8294	9952	11611	13269	16588	19904	23222	24880	26540	29860	33175	36492	39810	43126	46444	49761	53078	56396	59713	66348	72984	82936
STEAM OUTPUT (FROM & 212 °F)	(LBS/HR)	6900	8625	10350	12075	13800	17250	20700	24150	25875	27600	31050	34500	37950	41400	44850	48300	51750	55200	58650	62100	69000	75900	86250
RATED INPUT	(MBH)	8080	10080	12070	14110	16110	20000	23990	27900	29890	31880	35890	39860	43890	47880	51840	55840	59800	63810	67800	71780	79910	87930	99920
FURNACE VOLUME	(CuFt)	57.34	70.38	83.62	105.83	120.26	142.7	165.53	180.32	192.76	205.1	216.99	245.92	286.02	312.84	375.46	395.75	436.34	472.84	502.16	531.49	536.19	575.43	653.89
TURNAROUND VOLUME	(CuFt)	41.08	41.08	47.73	56.43	56.43	69.04	69.04	77.82	77.82	77.82	91.38	91.38	105.07	105.07	115.06	115.06	115.06	123.99	123.99	123.99	153.53	153.53	153.53
STEAM VOLUME	(CuFt)	55.29	65.83	74.26	64	71.09	123.16	139.54	142.7	151.07	160.84	151.63	168.92	165.15	178.51	165.01	172.85	188.53	214.58	226.48	238.38	240.02	255.65	286.9
STEAM RELEASE AREA	(SqFt)	60.31	71.8	78.57	75.19	83.52	101.66	115.18	118.05	124.98	133.06	125.82	140.16	137.38	148.5	152.8	160.06	174.59	183.66	193.85	204.03	191.43	203.96	228.82
GALLONS OF WATER FULL	(Gal)	1974	2380	2689	2803	3134	3886	4433	4692.4	4982	5321	5204	5831	5900	6403	6830	7170	7848	8495	8986	9472	9476	10121	11411
POUNDS OF WATER FULL	(Lbs)	16425	19796	22368	23317	26072	32328	36878	39029	41444	44261	43290	48502	49080	53262	56815	59636	65281	70661	74743	78782	78820	84184	94911
ECONOMIZER TUBE WEIGHT	(Lbs)	410	410	438	491	491	751	751	1054	1054	1054	1130	1130	1157	1157	1356	1356	1356	1414					