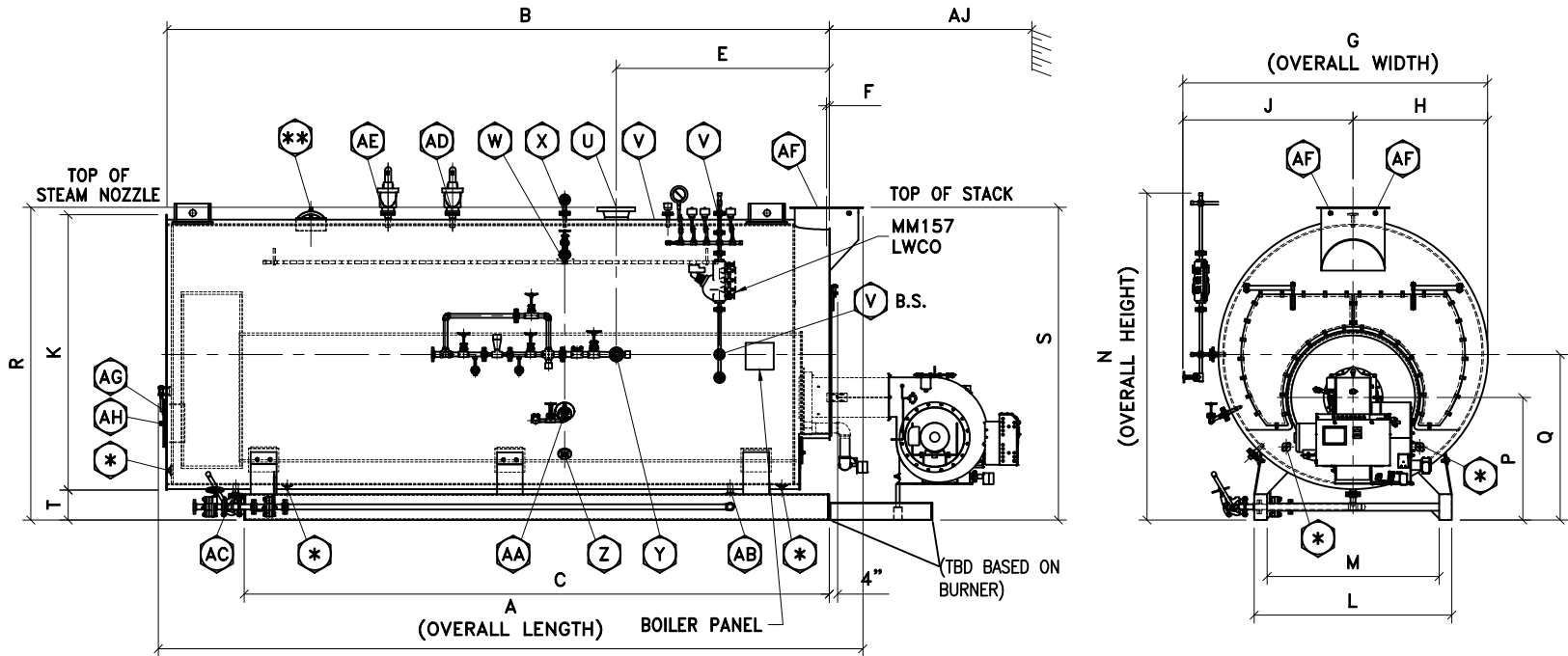


10701 E. 126th St. North,
Collinsville, OK 74021
PHONE: 918-274-0023
FAX: 918-274-0059



250 PSIG 2-PASS WET BACK
SCOTCH MARINE BOILER
DIMENSIONS & DATA CHART



FOR ALL BOILER MODELS	
B.S. - ON BOTH SIDES OF BOILER	
U - 300# WELDNECK FLG	
* - (5) 3" x 4" HANDHOLE	
** - (1) 12" x 16" MANWAY	

DIMENSIONS CHART

BOILER MODEL	F2-200	F2-250	F2-300	F2-350	F2-400	F2-500	F2-600	F2-700	F2-750	F2-800	F2-900	F2-1000	F2-1100	F2-1200	F2-1300	F2-1400	F2-1500	F2-1600	F2-1700	F2-1800	F2-2000	F2-2200	F2-2500
BOILER HORSEPOWER	200	250	300	350	400	500	600	700	750	800	900	1000	1100	1200	1300	1400	1500	1600	1700	1800	2000	2200	2500
HEATING SURFACE (ASME) (SqFt)	828.56	1017	1354	1437	1622	2096	2418	2886	3078	3300	3692	4170	4292	4686	4970	5230	5755	5809	6161	6513	7565	8107	9191
OVERALL LENGTH	A 14'-1"	16'-2"	16'-10"	16'-6"	17'-10"	17'-10"	19'-11"	19'-11"	22'-8"	21'-11"	22'-3"	22'-4"	21'-6"	22'-10"	23'-10"	25'-4"	27'-9"	27'-9"	29'-1"	30'-4"	27'-4"	28'-11"	31'-9"
SHELL LENGTH	B 13'-0"	15'-2"	15'-10"	15'-2"	16'-8"	16'-8"	18'-8"	18'-8"	19'-8"	20'-10"	19'-2"	21'-2"	20'-2"	21'-8"	22'-8"	23'-8"	25'-8"	25'-8"	27'-0"	28'-4"	24'-8"	26'-2"	29'-2"
SKID LENGTH	C 13'-1"	15'-2"	15'-10"	15'-8"	17'-1"	17'-1"	19'-1"	19'-10"	20'-11"	22'-1"	20'-3"	22'-3"	21'-3"	22'-10"	23'-10"	24'-10"	26'-10"	26'-10"	28'-2"	29'-7"	26'-7"	28'-0"	31'-0"
BOILER FRONT TO SKID FRONT	D 0"	0"	0"	0"	0"	0"	0"	0"	0"	0"	0"	0"	0"	0"	0"	0"	0"	0"	0"	0"	0"	0"	0"
BOILER FRONT TO STEAM NOZZLE	E 4'-7"	4'-7"	4'-7"	5'-4"	5'-5"	5'-5"	5'-10"	5'-10"	5'-10"	5'-10"	5'-10"	5'-10"	5'-10"	5'-10"	5'-10"	5'-10"	5'-10"	6'-6"	6'-6"	6'-6"	7'-8"	7'-8"	7'-8"
BOILER FRONT TO STACK	F 11 3/8"	11 3/8"	11 3/8"	1'-2"	1'-2"	1'-12"	1'-2"	1'-7"	1'-7"	1'-7"	1'-7"	1'-7"	1'-7"	1'-7"	1'-7"	1'-7"	1'-7"	1'-7"	1'-7"	1'-7"	1'-11"	1'-11"	1'-11"
OVERALL WIDTH	G 7'-1"	7'-1"	7'-5"	7'-11"	7'-11"	8'-9"	8'-9"	9'-1"	9'-1"	9'-1"	9'-7"	9'-7"	10'-1"	10'-1"	10'-5"	10'-5"	10'-5"	10'-9"	10'-9"	10'-9"	11'-9"	11'-9"	11'-9"
CENTER TO SMOKEBOX O.D.	H 3'-8"	3'-8"	3'-9"	4'-1"	4'-1"	4'-3"	4'-3"	4'-8"	4'-8"	4'-8"	4'-11"	4'-11"	5'-2"	5'-2"	5'-4"	5'-4"	5'-4"	5'-6"	5'-6"	5'-6"	6'-0"	6'-0"	6'-0"
CENTER TO PANEL	J 4'-6"	4'-6"	4'-7"	4'-11"	4'-11"	5'-1"	5'-1"	5'-6"	5'-6"	5'-6"	5'-9"	5'-9"	6'-0"	6'-0"	6'-2"	6'-2"	6'-2"	6'-4"	6'-4"	6'-4"	6'-10"	6'-10"	6'-10"
JACKET DIAMETER	K 7'-1"	7'-1"	7'-4"	7'-9"	7'-9"	8'-7"	8'-7"	9'-1"	9'-1"	9'-1"	9'-6"	9'-6"	10'-1"	10'-1"	10'-4"	10'-4"	10'-4"	10'-7"	10'-7"	10'-7"	11'-7"	11'-7"	11'-7"
SKID WIDTH OUTSIDE	L 5'-6"	5'-6"	5'-6"	5'-11"	6'-10"	6'-10"	7'-4"	7'-4"	7'-4"	7'-4"	7'-11"	7'-11"	8'-9"	8'-9"	8'-9"	9'-11"	9'-11"	9'-11"	9'-11"	9'-11"	9'-11"	9'-11"	9'-11"
SKID WIDTH INSIDE	M 4'-10"	4'-10"	4'-10"	5'-3"	5'-10"	5'-10"	6'-4"	6'-4"	6'-4"	6'-4"	6'-11"	6'-11"	7'-9"	7'-9"	7'-9"	8'-11"	8'-11"	8'-11"	8'-11"	8'-11"	8'-11"	8'-11"	8'-11"
OVERALL HEIGHT	N 8'-11"	8'-11"	9'-3 1/4"	9'-10"	9'-10"	10'-8"	10'-8"	10'-11"	10'-11"	10'-11"	11'-6"	11'-6"	11'-11"	11'-11"	12'-4"	12'-4"	12'-4"	12'-7"	12'-7"	12'-7"	13'-7"	13'-7"	13'-7"
FLOOR TO CENTER OF FURNACE	P 3'-5"	4'-1"	4'-2"	4'-3"	4'-3"	4'-7"	4'-7"	4'-8"	4'-8"	4'-8"	4'-9"	4'-9"	5'-1"	5'-1"	5'-2"	5'-2"	5'-2"	5'-4"	5'-4"	5'-4"	5'-7"	5'-7"	5'-7"
FLOOR TO CENTER OF BOILER	Q 4'-7"	5'-1"	5'-2"	5'-7"	5'-7"	6'-1"	6'-1"	6'-3"	6'-3"	6'-3"	6'-8"	6'-8"	6'-9"	6'-9"	6'-10 1/2"	6'-10 1/2"	6'-10 1/2"	7'-1"	7'-1"	7'-1"	7'-6 1/2"	7'-6 1/2"	7'-6 1/2"
FLOOR TO STEAM NOZZLE	R 8'-7"	8'-7"	8'-11"	9'-5"	9'-5"	10'-3"	10'-3"	10'-7"	10'-7"	10'-7"	11'-1"	11'-1"	11'-7"	11'-7"	11'-11"	11'-11"	11'-11"	12'-3"	12'-3"	12'-3"	13'-3"	13'-3"	13'-3"
FLOOR TO STACK OUTLET	S 8'-7"	8'-7"	8'-11"	9'-5"	9'-5"	10'-3"	10'-3"	10'-7"	10'-7"	10'-7"	11'-1"	11'-1"	11'-7"	11'-7"	11'-11"	11'-11"	11'-11"	12'-3"	12'-3"	12'-3"	13'-3"	13'-3"	13'-3"
FLOOR TO BOTTOM OF SMOKEBOX	T 1'-0"	1'-0"	1'-0"	1'-0"	1'-0"	1'-0"	1'-0"	1'-0"	1'-0"	1'-0"	1'-0"	1'-0"	1'-0"	1'-0"	1'-0"	1'-0"	1'-0"	1'-0"	1'-0"	1'-0"	1'-0"	1'-0"	1'-0"
STEAM NOZZLE CONNECTION	U 4"	4"	4"	4"	6"	6"	6"	6"	6"	6"	8"	8"	8"	8"	8"	8"	10"	10"	10"	10"	10"	10"	12"
AUXILIARY CONNECTION	V 1"	1"	1"	1"	1"	1"	1"	1"	1"	1"	1"	1"	1"	1"	1"	1"	1"	1"	1"	1"	1"	1"	1"
SURFACE BLOWDOWN CONNECTION	W 1"	1"	1"	1"	1"	1"	1"	1"	1"	1"	1"	1"	1"	1"	1"	1"	1"	1"	1"	1"	1"	1"	1"
VENT CONNECTION	X 2"	2"	2"	2"	2"	2"	2"	2"	2"	2"	2"	2"	2"	2"	2"	2"	2"	2"	2"	2"	2"	2"	2"
FEEDWATER CONNECTION	Y 2"	2"	2"	2"	2"	2"	2"	2"	2"	2"	2"	2"	3"	3"	3"	3"	3"	3"	3"	3"	3"	3"	3"
LOW FIRE HOLD CONNECTION	Z 1"	1"	1"	1"	1"	1"	1"	1"	1"	1"	1"	1"	1"	1"	1"	1"	1"	1"	1"	1"	1"	1"	1"
CHEMICAL FEED CONNECTION	AA 1 1/2"	1 1/2"	1 1/2"	1 1/2"	1 1/2"	1 1/2"	1 1/2"	1 1/2"	1 1/2"	1 1/2"	1 1/2"	1 1/2"	1 1/2"	1 1/2"	1 1/2"	1 1/2"	1 1/2"	1 1/2"	1 1/2"	1 1/2"	1 1/2"	1 1/2"	1 1/2"
BLOWDOWN FRONT CONNECTION	AB 1 1/4"	1 1/4"	1 1/2"	1 1/2"	1 1/2"	1 1/2"	1 1/2"	2"	2"	2"	2"	2"	2"	2"	2"	2"	2"	2"	2"	2"	2"	2"	2"
BLOWDOWN REAR CONNECTION	AC 1 1/4"	1 1/4"	1 1/2"	1 1/2"	1 1/2"	1 1/2"	1 1/2"	2"	2"	2"	2"	2"	2"	2"	2"	2"	2"	2"	2"	2"	2"	2"	2"
SAFETY VALVE CONNECTION	AD																						
FLANGED STACK I.D.	AF 20"	20"	20"	24"	24"	24"	26"	26"	26"	26"	26"	28"	28"	28"	36"	36"	36"	36"	36"	36"	40"	40"	40"
CLEAN OUT PORT	AG #24"	#24"	#24"	#24"	#24"	#24"	#24"	#24"	#24"	#24"	#24"	#24"	#24"	#24"	#24"	#24"	#24"	#24"	#24"	#24"	#24"	#24"	#24"
SIGHT PORT CONNECTION	AH 2" PIPE	2" PIPE	2" PIPE	2" PIPE	2" PIPE	2" PIPE	2" PIPE	2" PIPE	2" PIPE	2" PIPE	2" PIPE	2" PIPE	2" PIPE	2" PIPE	2" PIPE	2" PIPE	2" PIPE	2" PIPE	2" PIPE	2" PIPE	2" PIPE	2" PIPE	2" PIPE
MIN. TUBE REMOVAL FRONT	AJ 10'-2"	12'-4"	12'-10"	12'-4"	13'-10"	13'-10"	15'-10"	15'-10"	16'-10"	18'-0"	16'-4"	18'-4"	17'-4"	18'-10"	19'-10"	20'-10"	22'-10"	22'-10"	24'-2"	25'-2"	21'-10"	23'-0"	26'-4"

DATA CHART

GROSS OUTPUT (MBH)	6634	8294	9952	11611	13269	16588	19904	23222	24880	26540	29860	33175	36492	39810	43126	46444	49761	53078	56396	59713	66348	72984	82936
STEAM OUTPUT (FROM & 212 °F) (LBS/HR)	6900	8625	10350	12075	13800	17250	20700	24150	25875	27600	31050	34500	37950	41400	44850	48300	51750	55200	58650	62100	69000	75900	86250
RATED INPUT (MBH)	8080	10080	12070	14110	16110	20000	23990	27900	29890	31880	35890	39860	43890	47880	51840	55840	59800	63810	67800	71780	79910	87930	99920
FURNACE VOLUME (CuFt)	57.34	70.38	83.62	105.83	120.26	142.7	165.53	180.32	192.76	205.1	216.99	245.92	286.02	312.84	375.46	395.75	436.34	472.84	502.16	531.49	536.19	575.43	653.89
TURNAROUND VOLUME (CuFt)	41.08	41.08	47.73	56.43	56.43	69.04	69.04	77.82	77.82	77.82	91.38	91.38	105.07	105.07	115.06	115.06	115.06	123.99	123.99	123.99	153.53	153.53	153.53
STEAM VOLUME (CuFt)	55.29	65.83	74.26	64	71.09	123.16	139.54	142.7	151.07	160.84	151.63	168.92	165.15	178.51	165.01	172.85	188.53	214.58	226.48	238.38	240.02	255.65	286.9
STEAM RELEASE AREA (SqFt)	60.31	71.8	78.57	75.19	83.52	101.66	115.18	118.05	124.98	133.06	125.82	140.16	137.38	148.5	152.8	160.06	174.59	183.66	193.85	204.03	191.43	203.96	228.82
GALLONS OF WATER FULL (Gal)	1974	2380	2689	2803	3134	3886	4433	4692.4	4982	5321	5204	5831	5900	6403	6830	7170	7848	8495	8986	9472	9476	10121	11411
GALLONS OF WATER @ NWL (Gal)	1561	1887	2133	2324	2602	2965	3390	3625	3852	4118	4070	4567	4665	5068	5596	5877	6438	6890	7291	7688	7680	8208	9264
POUNDS OF WATER FULL (Lbs)	16425	19796	22368	23317	26072	32328	36878	39029	41444	44261	43290	48502	49080	53262	56815	59636	65281	70661	74743	78782	78820	84184	94911
POUNDS OF WATER @ NWL (Lbs)	12985	15700	17747	19335	21648	24665	28197	30151	32044	34254	33855	37992	38805	42156	46547	48882	53550	57310	60651	63950	63886	68277	77060
SHIPPING WEIGHT WITHOUT BURNER (Lbs)	26150	28690	31670	34120	36400	44720	48640	53020	58150	58720	60750	65720	71720	77,100	83280	86400	92540	91490	95490	99800	110570	116300	127800

NOTES:

- VICTORY ENERGY, L.L.C. RESERVES THE RIGHT TO CHANGE DIMENSION DUE TO PRODUCT REVISION OR JOB REQUIREMENTS.
- PRELIMINARY DIMENSIONS AND MAY BE USED FOR LAYOUT ONLY.
- BOILER INSULATED WITH 2"-8# DENSITY MINERAL FIBER INSULATION WITH 22 GAUGE STEEL JACKET.

THIS DESIGN OR DRAWING IS NOT SOLD AND IS SUBJECT TO RECALL. REPRODUCTION OR COPYING RIGHTS ARE RESERVED SOLELY TO VICTORY ENERGY OPERATIONS, L.L.C. THE DRAWING HAS BEEN DELIVERED AND RECEIVED ON THE EXPRESSED CONDITIONS THAT IT IS NOT USED IN ANY WAY AGAINST THE INTERESTS AND BENEFITS OF VICTORY ENERGY OPERATIONS, L.L.C., AND THAT THIS DRAWING AND ALL COPIES OF IT WILL BE RETURNED TO VICTORY ENERGY OPERATIONS, L.L.C. IMMEDIATELY UPON DEMAND, AND THAT ALL INFORMATION DISCLOSED BY THIS DRAWING TO THE HOLDER SHALL BE HELD IN CONFIDENCE.