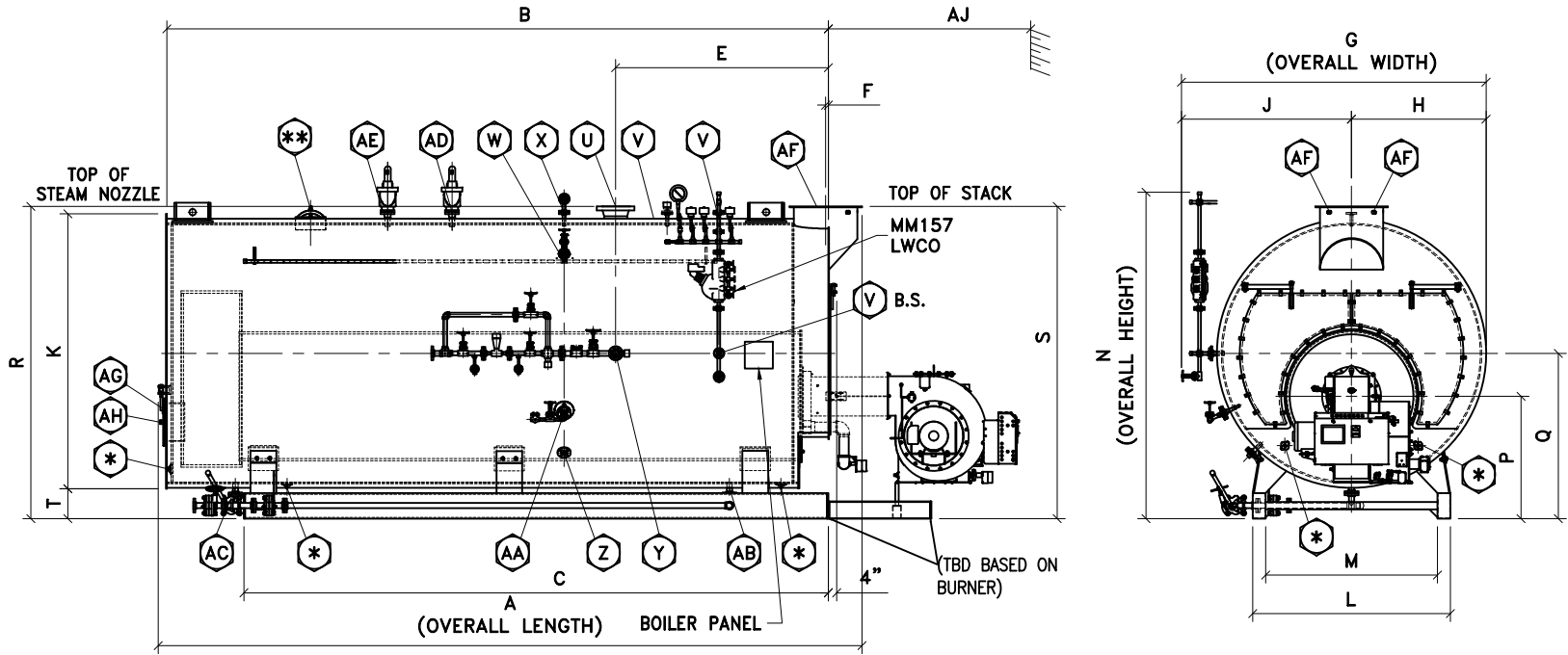


200 PSIG 2-PASS WET BACK
 SCOTCH MARINE BOILER
 DIMENSIONS & DATA CHART



- FOR ALL BOILER MODELS
 B.S. - ON BOTH SIDES OF BOILER
 U - 300# WELDNECK FLG
 * - (5) 3" x 4" HANDHOLE
 ** - (1) 12" x 16" MANWAY

DIMENSIONS CHART

BOILER MODEL	F2-200	F2-250	F2-300	F2-350	F2-400	F2-500	F2-600	F2-700	F2-750	F2-800	F2-900	F2-1000	F2-1100	F2-1200	F2-1300	F2-1400	F2-1500	F2-1600	F2-1700	F2-1800	F2-2000	F2-2200	F2-2500
BOILER HORSEPOWER	200	250	300	350	400	500	600	700	750	800	900	1000	1100	1200	1300	1400	1500	1600	1700	1800	2000	2200	2500
HEATING SURFACE (ASME) (SqFt)	828.56	1017	1354	1437	1622.5	2098	2418	2886	3079	3033	3694	4170	4294	4686	4972	5234	5756	5878	6234	6590	7631	8178	9194
OVERALL LENGTH	A 14'-1"	16'-2"	16'-10"	16'-6"	17'-10"	17'-10"	19'-11"	19'-11"	22'-8"	21'-11"	22'-3"	22'-4"	21'-6"	22'-10"	23'-10"	25'-4"	27'-9"	27'-9"	29'-1"	30'-4"	27'-4"	28'-11"	31'-9"
SHELL LENGTH	B 13'-0"	15'-2"	15'-10"	15'-2"	16'-8"	16'-8"	18'-8"	18'-8"	19'-8"	20'-10"	19'-2"	21'-2"	20'-2"	21'-8"	22'-8"	23'-8"	25'-8"	25'-8"	27'-0"	28'-4"	24'-8"	26'-2"	29'-2"
SKID LENGTH	C 13'-1"	15'-2"	15'-10"	15'-8"	17'-1"	17'-1"	19'-1"	19'-10"	20'-11"	22'-1"	20'-3"	22'-3"	21'-3"	22'-10"	23'-10"	24'-10"	26'-10"	26'-10"	28'-2"	29'-7"	26'-7"	28'-0"	31'-0"
BOILER FRONT TO SKID FRONT	D 0"	0"	0"	0"	0"	0"	0"	0"	0"	0"	0"	0"	0"	0"	0"	0"	0"	0"	0"	0"	0"	0"	0"
BOILER FRONT TO STEAM NOZZLE	E 4'-7"	4'-7"	4'-7"	5'-4"	5'-5"	5'-5"	5'-10"	5'-10"	5'-10"	5'-10"	5'-10"	5'-10"	5'-10"	5'-10"	5'-10"	5'-10"	5'-10"	6'-6"	6'-6"	6'-6"	7'-8"	7'-8"	7'-8"
BOILER FRONT TO STACK	F 11 3/8"	11 3/8"	11 3/8"	1'-2"	1'-2"	1'-12"	1'-2"	1'-7"	1'-7"	1'-7"	1'-7"	1'-7"	1'-7"	1'-7"	1'-7"	1'-7"	1'-7"	1'-7"	1'-7"	1'-7"	1'-11"	1'-11"	1'-11"
OVERALL WIDTH	G 7'-1"	7'-1"	7'-5"	7'-11"	7'-11"	8'-9"	8'-9"	9'-1"	9'-1"	9'-1"	9'-7"	9'-7"	10'-1"	10'-1"	10'-5"	10'-5"	10'-5"	10'-9"	10'-9"	10'-9"	11'-9"	11'-9"	11'-9"
CENTER TO SMOKEBOX O.D.	H 3'-8"	3'-8"	3'-9"	4'-1"	4'-1"	4'-3"	4'-3"	4'-8"	4'-8"	4'-8"	4'-11"	4'-11"	5'-2"	5'-2"	5'-4"	5'-4"	5'-4"	5'-6"	5'-6"	5'-6"	6'-0"	6'-0"	6'-0"
CENTER TO PANEL	J 4'-6"	4'-6"	4'-7"	4'-11"	4'-11"	5'-1"	5'-1"	5'-6"	5'-6"	5'-6"	5'-9"	5'-9"	6'-0"	6'-0"	6'-2"	6'-2"	6'-2"	6'-4"	6'-4"	6'-4"	6'-10"	6'-10"	6'-10"
JACKET DIAMETER	K 7'-1"	7'-1"	7'-4"	7'-9"	7'-9"	8'-7"	8'-7"	9'-1"	9'-1"	9'-1"	9'-6"	9'-6"	10'-1"	10'-1"	10'-4"	10'-4"	10'-4"	10'-7"	10'-7"	10'-7"	11'-7"	11'-7"	11'-7"
SKID WIDTH OUTSIDE	L 5'-6"	5'-6"	5'-6"	5'-11"	6'-10"	6'-10"	7'-4"	7'-4"	7'-4"	7'-4"	7'-11"	7'-11"	8'-9"	8'-9"	8'-9"	9'-11"	9'-11"	9'-11"	9'-11"	9'-11"	9'-11"	9'-11"	9'-11"
SKID WIDTH INSIDE	M 4'-10"	4'-10"	4'-10"	5'-3"	5'-10"	5'-10"	6'-4"	6'-4"	6'-4"	6'-4"	6'-11"	6'-11"	7'-9"	7'-9"	7'-9"	8'-11"	8'-11"	8'-11"	8'-11"	8'-11"	8'-11"	8'-11"	8'-11"
OVERALL HEIGHT	N 8'-11"	8'-11"	9'-3 1/4"	9'-10"	9'-10"	10'-8"	10'-8"	10'-11"	10'-11"	10'-11"	11'-6"	11'-6"	11'-11"	11'-11"	12'-4"	12'-4"	12'-4"	12'-7"	12'-7"	12'-7"	13'-7"	13'-7"	13'-7"
FLOOR TO CENTER OF FURNACE	P 3'-5"	4'-1"	4'-2"	4'-3"	4'-3"	4'-7"	4'-7"	4'-8"	4'-8"	4'-8"	4'-9"	4'-9"	5'-1"	5'-1"	5'-2"	5'-2"	5'-2"	5'-4"	5'-4"	5'-4"	5'-7"	5'-7"	5'-7"
FLOOR TO CENTER OF BOILER	Q 4'-7"	5'-1"	5'-2"	5'-7"	5'-7"	6'-1"	6'-1"	6'-3"	6'-3"	6'-3"	6'-8"	6'-8"	6'-9"	6'-9"	6'-10 1/2"	6'-10 1/2"	6'-10 1/2"	7'-1"	7'-1"	7'-1"	7'-6 1/2"	7'-6 1/2"	7'-6 1/2"
FLOOR TO STEAM NOZZLE	R 8'-7"	8'-7"	8'-11"	9'-5"	9'-5"	10'-3"	10'-3"	10'-7"	10'-7"	10'-7"	10'-7"	11'-1"	11'-1"	11'-7"	11'-7"	11'-11"	11'-11"	12'-3"	12'-3"	12'-3"	13'-3"	13'-3"	13'-3"
FLOOR TO STACK OUTLET	S 8'-7"	8'-7"	8'-11"	9'-5"	9'-5"	10'-3"	10'-3"	10'-7"	10'-7"	10'-7"	11'-1"	11'-1"	11'-7"	11'-7"	11'-11"	11'-11"	11'-11"	12'-3"	12'-3"	12'-3"	13'-3"	13'-3"	13'-3"
FLOOR TO BOTTOM OF SMOKEBOX	T 1'-0"	1'-0"	1'-0"	1'-0"	1'-0"	1'-0"	1'-0"	1'-0"	1'-0"	1'-0"	1'-0"	1'-0"	1'-0"	1'-0"	1'-0"	1'-0"	1'-0"	1'-0"	1'-0"	1'-0"	1'-0"	1'-0"	1'-0"
STEAM NOZZLE CONNECTION	U 4"	4"	6"	6"	6"	6"	6"	8"	8"	8"	8"	8"	8"	10"	10"	10"	10"	10"	10"	10"	12"	12"	12"
AUXILIARY CONNECTION	V 1"	1"	1"	1"	1"	1"	1"	1"	1"	1"	1"	1"	1"	1"	1"	1"	1"	1"	1"	1"	1"	1"	1"
SURFACE BLOWDOWN CONNECTION	W 1"	1"	1"	1"	1"	1"	1"	1"	1"	1"	1"	1"	1"	1"	1"	1"	1"	1"	1"	1"	1"	1"	1"
VENT CONNECTION	X 2"	2"	2"	2"	2"	2"	2"	2"	2"	2"	2"	2"	2"	2"	2"	2"	2"	2"	2"	2"	2"	2"	2"
FEEDWATER CONNECTION	Y 2"	2"	2"	2"	2"	2"	2"	2"	2"	2"	2"	2"	3"	3"	3"	3"	3"	3"	3"	3"	3"	3"	3"
LOW FIRE HOLD CONNECTION	Z 1"	1"	1"	1"	1"	1"	1"	1"	1"	1"	1"	1"	1"	1"	1"	1"	1"	1"	1"	1"	1"	1"	1"
CHEMICAL FEED CONNECTION	AA 1 1/2"	1 1/2"	1 1/2"	1 1/2"	1 1/2"	1 1/2"	1 1/2"	1 1/2"	1 1/2"	1 1/2"	1 1/2"	1 1/2"	1 1/2"	1 1/2"	1 1/2"	1 1/2"	1 1/2"	1 1/2"	1 1/2"	1 1/2"	1 1/2"	1 1/2"	1 1/2"
BLOWDOWN FRONT CONNECTION	AB 1 1/4"	1 1/4"	1 1/2"	1 1/2"	1 1/2"	1 1/2"	1 1/2"	2"	2"	2"	2"	2"	2"	2"	2"	2"	2"	2"	2"	2"	2"	2"	2"
BLOWDOWN REAR CONNECTION	AC 1 1/4"	1 1/4"	1 1/2"	1 1/2"	1 1/2"	1 1/2"	1 1/2"	2"	2"	2"	2"	2"	2"	2"	2"	2"	2"	2"	2"	2"	2"	2"	2"
SAFETY VALVE CONNECTION	AD																						
FLANGED STACK I.D.	AF 20"	20"	20"	24"	24"	24"	26"	26"	26"	26"	26"	26"	28"	28"	28"	36"	36"	36"	36"	36"	40"	40"	40"
CLEAN OUT PORT	AG #24"	#24"	#24"	#24"	#24"	#24"	#24"	#24"	#24"	#24"	#24"	#24"	#24"	#24"	#24"	#24"	#24"	#24"	#24"	#24"	#24"	#24"	#24"
SIGHT PORT CONNECTION	AH 2" PIPE	2" PIPE	2" PIPE	2" PIPE	2" PIPE	2" PIPE	2" PIPE	2" PIPE	2" PIPE	2" PIPE	2" PIPE	2" PIPE	2" PIPE	2" PIPE	2" PIPE	2" PIPE	2" PIPE	2" PIPE	2" PIPE	2" PIPE	2" PIPE	2" PIPE	2" PIPE
MIN. TUBE REMOVAL FRONT	AJ 10'-2"	12'-4"	12'-10"	12'-4"	13'-10"	13'-10"	15'-10"	15'-10"	16'-10"	18'-0"	16'-4"	18'-4"	17'-4"	18'-10"	19'-10"	20'-10"	22'-10"	22'-10"	24'-2"	25'-2"	21'-10"	23'-0"	26'-4"

DATA CHART

GROSS OUTPUT (MBH)	6663	8328	9994	11659	13324	16655	19987	23317	24980	26650	29980	33311	36650	39975	43304	46635	49967	53300	56630	59960	66622	73290	83280
STEAM OUTPUT (FROM & 212 °F) (LBS/HR)	6900	8625	10350	12075	13800	17250	20700	24150	25875	27600	31050	34500	37950	41400	44850	48300	51750	55200	58650	62100	69000	75900	86250
RATED INPUT (MBH)	8080	10070	12060	14100	16090	19980	23960	27880	29860	31850	35850	39810	43830	47810	51780	55770	59720	63730	67710	71690	79800	87800	99730
FURNACE VOLUME (CuFt)	57.34	71.41	84.77	107.1	121.7	145.83	167.34	182.21	194.78	209.44	221.22	248.31	291.04	318.32	381.64	402.26	443.52	480.31	510.1	539.89	543.96	583.77	663.37
TURNAROUND VOLUME (CuFt)	41.08	41.08	47.73	56.43	56.43	69.04	69.04	77.82	77.82	77.82	91.38	91.38	105.07	105.07	115.06	115.06	115.06	123.99	123.99	123.99	153.53	153.53	153.53
STEAM VOLUME (CuFt)	55.29	65.83	74.26	64	71.09	123.16	139.54	142.7	151.07	160.84	151.63	168.92	165.15	178.51	165.01	172.85	188.53	214.58	226.48	238.38	240.02	255.65	286.9
STEAM RELEASE AREA (SqFt)	60.31	71.8	78.57	75.19	83.52	101.66	115.18	118.05	124.98	133.06	125.82	140.16	137.38	148.5	152.8	160.06	174.59	183.66	193.85	204.03	191.43	203.96	228.82
GALLONS OF WATER FULL (Gal)	1980	2385	2692	2810	3141	3894	4442	4700	4991	5330	5213	5839	5910	6412	6840	7179	7858	8483	8972	9462	9472	10115	11427
GALLONS OF WATER @ NWL (Gal)	1567	1893	2136	2331	2609	2973	3398	3632	3860	4126	4078	4576	4674	5077	5605	5886	6447	6878	7278	7679	7676	8203	9281
POUNDS OF WATER FULL (Lbs)	16473	19844	22394	23373	26128	32390	36941	39095	41510	44327	43361	48573	49156	53339	56894	59716	65361	70563	74633	78703	78785	84136	95049
POUNDS OF WATER @ NWL (Lbs)	13033	15748	17774	19391	21704	24727	28259	30216	32110	34320	33926	38063	38881	42232	46627	48962	53630	57211	60541	63870	63851	68230	77198
SHIPPING WEIGHT WITHOUT BURNER (Lbs)	25370	27820	30870	33070	35270	40070	44970	49170	51110	53370	55507	61077	62920	66550	76270	79020	84520	83450	87070	90520	97520	102420	112017

NOTES:

1. VICTORY ENERGY, L.L.C. RESERVES THE RIGHT TO CHANGE DIMENSION DUE TO PRODUCT REVISION OR JOB REQUIREMENTS.
2. PRELIMINARY DIMENSIONS AND MAY BE USED FOR LAYOUT ONLY.
3. BOILER INSULATED WITH 2"-8# DENSITY MINERAL FIBER INSULATION WITH 22 GAUGE STEEL JACKET.

THIS DESIGN OR DRAWING IS NOT SOLD AND IS SUBJECT TO RECALL. REPRODUCTION OR COPYING RIGHTS ARE RESERVED SOLELY TO VICTORY ENERGY OPERATIONS, L.L.C. THE DRAWING HAS BEEN DELIVERED AND RECEIVED ON THE EXPRESSED CONDITIONS THAT IT IS NOT USED IN ANY WAY AGAINST THE INTERESTS AND BENEFITS OF VICTORY ENERGY OPERATIONS, L.L.C., AND THAT THIS DRAWING AND ALL COPIES OF IT WILL BE RETURNED TO VICTORY ENERGY OPERATIONS, L.L.C. IMMEDIATELY UPON DEMAND, AND THAT ALL INFORMATION DISCLOSED BY THIS DRAWING TO THE HOLDER SHALL BE HELD IN CONFIDENCE.