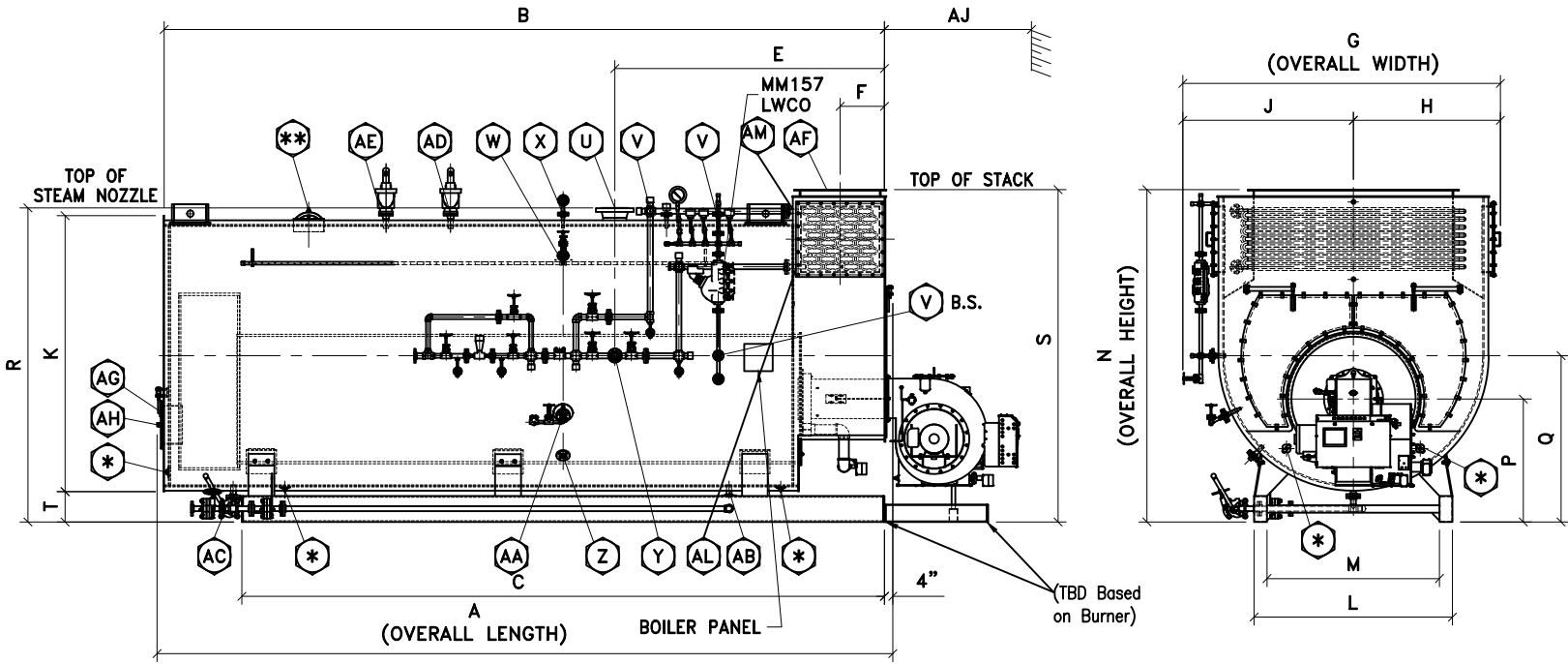


150 PSIG 2-PASS WET BACK SCOTCH MARINE BOILER DIMENSIONS & DATA CHART



FOR ALL BOILER MODELS
B.S. - ON BOTH SIDES OF BOILER
U - 300# WELDNECK FLG
* - (5) 3" x 4" HANDHOLE
** - (1) 12" x 16" MANWAY

DIMENSIONS CHART

BOILER MODEL	F2-200	F2-250	F2-300	F2-350	F2-400	F2-500	F2-600	F2-700	F2-750	F2-800	F2-900	F2-1000	F2-1100	F2-1200	F2-1300	F2-1400	F2-1500	F2-1600	F2-1700	F2-1800	F2-2000	F2-2200	F2-2500	
BOILER HORSEPOWER	200	250	300	350	400	500	600	700	750	800	900	1000	1100	1200	1300	1400	1500	1600	1700	1800	2000	2200	2500	
HEATING SURFACE (ASME) (SqFt)	829.05	1079.5	1354.4	1438.07	1623.08	2098	2419.5	2887.5	3079	3033.5	3694.25	4172	4296	4686	4973.5	5235.35	5759	5881	6237.25	6593.5	7633.8	8180.5	9274	
OVERALL LENGTH	A	13'-11"	16'-1"	16'-9"	16'-6"	18'-0"	18'-0"	19'-11"	20'-8"	21'-8"	22'-10"	21'-2"	23'-2"	22'-2"	23'-8"	24'-9"	25'-9"	27'-9"	29'-1"	30'-4"	27'-4"	28'-11"	31'-11"	
SHELL LENGTH	B	13'-6"	15'-8"	16'-4"	16'-2"	17'-7"	17'-7"	19'-7"	20'-4"	21'-5"	22'-5"	20'-9"	22'-9"	21'-9"	23'-4"	24'-4"	25'-4"	27'-4"	27'-4"	28'-8"	30'-1"	27'-1"	28'-6"	31'-6"
SKID LENGTH	C	13'-1"	15'-2"	15'-10"	15'-8"	17'-1"	17'-1"	19'-1"	19'-10"	20'-11"	22'-1"	20'-3"	22'-3"	21'-3"	22'-10"	23'-10"	24'-10"	26'-10"	26'-10"	28'-2"	29'-7"	26'-7"	28'-0"	31'-0"
BOILER FRONT TO SKID FRONT	D	0"	0"	0"	0"	0"	0"	0"	0"	0"	0"	0"	0"	0"	0"	0"	0"	0"	0"	0"	0"	0"	0"	
BOILER FRONT TO STEAM NOZZLE	E	4'-7"	4'-7"	4'-7"	5'-4"	5'-5"	5'-5"	5'-10"	5'-10"	5'-10"	5'-10"	5'-10"	5'-10"	5'-10"	5'-10"	5'-10"	5'-10"	6'-6"	6'-6"	6'-6"	7'-8"	7'-8"	7'-8"	
BOILER FRONT TO STACK	F	11 3/8"	11 3/8"	11 3/8"	1'-2"	1'-2"	1'-12"	1'-2"	1'-7"	1'-7"	1'-7"	1'-7"	1'-7"	1'-7"	1'-7"	1'-7"	1'-7"	1'-7"	1'-7"	1'-7"	1'-11"	1'-11"	1'-11"	
OVERALL WIDTH	G	7'-4"	7'-4"	7'-8"	8'-2"	8'-2"	8'-12"	8'-12"	9'-4"	9'-4"	9'-4"	9'-10"	10'-4"	10'-4"	10'-8"	10'-8"	10'-8"	10'-12"	10'-12"	10'-12"	11'-12"	11'-12"	11'-12"	
CENTER TO SMOKEBOX O.D.	H	3'-8"	3'-8"	3'-9"	4'-1"	4'-1"	4'-3"	4'-3"	4'-8"	4'-8"	4'-8"	4'-11"	4'-11"	5'-2"	5'-4"	5'-4"	5'-4"	5'-6"	5'-6"	5'-6"	5'-6"	6'-0"	6'-0"	
CENTER TO PANEL	J	4'-6"	4'-6"	4'-7"	4'-11"	4'-11"	5'-1"	5'-1"	5'-6"	5'-6"	5'-6"	5'-9"	5'-9"	6'-0"	6'-0"	6'-2"	6'-2"	6'-2"	6'-4"	6'-4"	6'-4"	6'-10"	6'-10"	
JACKET DIAMETER	K	7'-1"	7'-1"	7'-4"	7'-9"	7'-9"	8'-7"	8'-7"	9'-1"	9'-1"	9'-1"	9'-6"	9'-6"	10'-1"	10'-1"	10'-4"	10'-4"	10'-4"	10'-7"	10'-7"	10'-7"	11'-7"	11'-7"	
SKID WIDTH OUTSIDE	L	5'-6"	5'-6"	5'-6"	5'-11"	6'-10"	6'-10"	7'-4"	7'-4"	7'-4"	7'-4"	7'-11"	7'-11"	8'-9"	8'-9"	8'-9"	9'-11"	9'-11"	9'-11"	9'-11"	9'-11"	9'-11"	9'-11"	
SKID WIDTH INSIDE	M	4'-10"	4'-10"	4'-10"	5'-3"	5'-10"	5'-10"	6'-4"	6'-4"	6'-4"	6'-4"	6'-11"	6'-11"	7'-9"	7'-9"	7'-9"	8'-11"	8'-11"	8'-11"	8'-11"	8'-11"	8'-11"	8'-11"	
OVERALL HEIGHT	N	8'-11"	8'-11"	9'-3 1/4"	9'-10"	9'-10"	10'-8"	10'-8"	10'-11"	10'-11"	10'-11"	11'-6"	11'-6"	11'-11"	11'-11"	12'-4"	12'-4"	12'-4"	12'-7"	12'-7"	12'-7"	13'-7"	13'-7"	
FLOOR TO CENTER OF FURNACE	P	3'-5"	4'-1"	4'-2"	4'-3"	4'-3"	4'-7"	4'-7"	4'-8"	4'-8"	4'-8"	4'-9"	5'-1"	5'-1"	5'-2"	5'-2"	5'-2"	5'-4"	5'-4"	5'-4"	5'-7"	5'-7"	5'-7"	
FLOOR TO CENTER OF BOILER	Q	4'-7"	5'-1"	5'-2"	5'-7"	5'-7"	6'-1"	6'-1"	6'-3"	6'-3"	6'-3"	6'-8"	6'-8"	6'-9"	6'-9"	6'-10 1/2"	6'-10 1/2"	6'-10 1/2"	7'-1"	7'-1"	7'-1"	7'-6 1/2"	7'-6 1/2"	
FLOOR TO STEAM NOZZLE	R	8'-7"	8'-7"	8'-11"	9'-5"	9'-5"	10'-3"	10'-3"	10'-7"	10'-7"	10'-7"	11'-1"	11'-1"	11'-7"	11'-7"	11'-11"	11'-11"	11'-11"	12'-3"	12'-3"	12'-3"	13'-3"	13'-3"	
FLOOR TO STACK OUTLET	S	8'-7"	8'-7"	8'-11"	9'-5"	9'-5"	10'-3"	10'-3"	10'-7"	10'-7"	10'-7"	11'-1"	11'-1"	11'-7"	11'-7"	11'-11"	11'-11"	11'-11"	12'-3"	12'-3"	12'-3"	13'-3"	13'-3"	
FLOOR TO BOTTOM OF SMOKEBOX	T	1'-0"	1'-0"	1'-0"	1'-0"	1'-0"	1'-0"	1'-0"	1'-0"	1'-0"	1'-0"	1'-0"	1'-0"	1'-0"	1'-0"	1'-0"	1'-0"	1'-0"	1'-0"	1'-0"	1'-0"	1'-0"	1'-0"	
STEAM NOZZLE CONNECTION	U	4"	6"	6"	6"	6"	6"	8"	8"	8"	8"	8"	10"	10"	10"	10"	10"	12"	12"	12"	12"	12"	14"	
AUXILIARY CONNECTION	V	1"	1"	1"	1"	1"	1"	1"	1"	1"	1"	1"	1"	1"	1"	1"	1"	1"	1"	1"	1"	1"	1"	
SURFACE BLOWDOWN CONNECTION	W	1"	1"	1"	1"	1"	1"	1"	1"	1"	1"	1"	1"	1"	1"	1"	1"	1"	1"	1"	1"	1"	1"	
VENT CONNECTION	X	2"	2"	2"	2"	2"	2"	2"	2"	2"	2"	2"	2"	2"	2"	2"	2"	2"	2"	2"	2"	2"	2"	
FEEDWATER CONNECTION	Y	2"	2"	2"	2"	2"	2"	2"	2"	2"	2"	2"	3"	3"	3"	3"	3"	3"	3"	3"	3"	3"	3"	
LOW FIRE HOLD CONNECTION	Z	1"	1"	1"	1"	1"	1"	1"	1"	1"	1"	1"	1"	1"	1"	1"	1"	1"	1"	1"	1"	1"	1"	
CHEMICAL FEED CONNECTION	AA	1 1/2"	1 1/2"	1 1/2"	1 1/2"	1 1/2"	1 1/2"	1 1/2"	1 1/2"	1 1/2"	1 1/2"	1 1/2"	1 1/2"	1 1/2"	1 1/2"	1 1/2"	1 1/2"	1 1/2"	1 1/2"	1 1/2"	1 1/2"	1 1/2"	1 1/2"	
BLOWDOWN FRONT CONNECTION	AB	1 1/4"	1 1/4"	1 1/2"	1 1/2"	1 1/2"	1 1/2"	2"	2"	2"	2"	2"	2"	2"	2"	2"	2"	2"	2"	2"	2"	2"	2"	
BLOWDOWN REAR CONNECTION	AC	1 1/4"	1 1/4"	1 1/2"	1 1/2"	1 1/2"	1 1/2"	2"	2"	2"	2"	2"	2"	2"	2"	2"	2"	2"	2"	2"	2"	2"	2"	
SAFETY VALVE CONNECTION	AD																							
STACK WIDTH	AE	22.75"	22.75"	22.75"	27.625"	27.625"	27.625"	27.625"	36.125"	36.125"	36.125"	36.125"	36.125"	36.125"	36.75"	36.75"	36.75"	36.75"	36.75"	36.75"	44.625"	44.625"	44.625"	
STACK LENGTH	AF	4'-10"	4'-10"	4'-10"	4'-10"	4'-10"	4'-10"	4'-10"	4'-10"	4'-10"	4'-10"	4'-10"	4'-10"	4'-10"	4'-10"	4'-10"	4'-10"	4'-10"	4'-10"	4'-10"	4'-10"	4'-10"	4'-10"	
CLEAN OUT PORT	AG	#24"	#24"	#24"	#24"	#24"	#24"	#24"	#24"	#24"	#24"	#24"	#24"	#24"	#24"	#24"	#24"	#24"	#24"	#24"	#24"	#24"	#24"	
SIGHT PORT CONNECTION	AH	2" PIPE	2" PIPE	2" PIPE	2" PIPE	2" PIPE	2" PIPE	2" PIPE	2" PIPE	2" PIPE	2" PIPE	2" PIPE	2" PIPE	2" PIPE	2" PIPE	2" PIPE	2" PIPE	2" PIPE	2" PIPE	2" PIPE	2" PIPE	2" PIPE	2" PIPE	
MIN. TUBE REMOVAL FRONT	AJ	10'-2"	12'-4"	12'-10"	12'-4"	13'-10"	13'-10"	15'-10"	15'-10"	16'-10"	18'-0"	16'-4"	18'-4"	17'-4"	18'-10"	19'-10"	20'-10"	22'-10"	22'-10"	24'-2"	25'-2"	21'-10"	23'-0"	
ECONOMIZER INLET CONN	AL	2"	2"	2"	2"	2"	2"	2"	2"	2"	2"	2"	2"	2"	2"	2"	2"	2"	2"	2"	2"	2"	2"	
ECONOMIZER OUTLET CONN	AM	2"	2"	2"	2"	2"	2"	2"	2"	2"	2"	2"	2"	2"	2"	2"	2"	2"	2"	2"	2"	2"	2"	

DATA CHART

	(MBH)	6686	8357	10028	11700	13371	16714	20057	23399	25071	26742	30085	33428	36770	40113	43456	46799	50171	53484	56827	60170	66855	73541	83569
GROSS OUTPUT	(MBH)	6686	8357	10028	11700	13371	16714	20057	23399	25071	26742	30085	33428	36770	40113	43456	46799	50171	53484	56827	60170	66855	73541	83569
STEAM OUTPUT (FROM & 212 °F)	(LBS/HR)	6900	8625	10350	12075	13800	17250	20700	24150	25875	27600	31050	34500	37950	41400	44850	48300	51750	55200	58650	62100	69000	75900	86250
RATED INPUT	(MBH)	8080	10060	12050	14090	16090	19970	23950	27860	29840	31820	35820	39780	43800	47760	51750	55740	59680	63670	67640	71610	79710	87690	99610
FURNACE VOLUME	(CuFt)	58.18	72.45	85.94	109.65	123.14	147.42	171	186.03	196.81	211.63	223.35	253.13	296.1	321.09	387.87	408.83	450.76	487.85	518.1	548.36	551.79	592.16	672.91
TURNAROUND VOLUME	(CuFt)	41.08	41.08	47.73	56.43	56.43	69.04	69.04	77.82	77.82	77.82	91.38	91.38	105.07	105.07	115.06	115.06	115.06	123.99	123.99	123.99	153.53	153.53	153.53
STEAM VOLUME	(CuFt)	55.29	65.83	74.26	64	71.09	123.16	139.54	142.7	151.07	160.84	143.83	168.92	165.15	178.51	165.01	172.85	188.53	214.58	226.48	238.38	240.02	255.65	286.9
STEAM RELEASE AREA	(SqFt)	60.31	71.8	78.57	75.19	83.52	101.66	115.18	118.05	124.98	133.06	124.04	140.16	137.38	148.5	152.8	160.06	174.59	183.66	193.85	204.03	191.43	203.96	228.82
GALLONS OF WATER FULL	(Gal)	1984	2388	2698	2813	3144	3901	4448	4708	4998	5337	5221	5848	5919	6421	6849	7189	7867	8493	8982	9472	9484	10126	11413
GALLONS OF WATER @ NWL	(Gal)	1569	1896	2143	2334	2612	2980	3404	3640	3868	4134	4146	4585	4683	5086	5615	5896	6457	6888	7288	7688	7688	8214	9267
POUNDS OF WATER FULL	(Lbs)	16497	19867	22445	23401	26155	32452	37002	39160	41575	44392	43431	48644	49232	53414	56974	59796	65440	70645	74715	78785	78877	84228</	